

Control center for vehicle control, production and logistics in the automotive plant - a decisive factor for a successful future

In the automobile factory, **all steps mesh exactly like gear wheels.**

Deviations or even failures result in enormous costs.

In the worst case, the entire production is forced to a standstill.

With JST you have the right partner at your side for planning and implementing a modern control room.

We **combine every component of vehicle control**, production and logistics perfectly in the **control center**.

Only the very best goes into the heart of the car plant: ergonomic control room furniture, large format monitor walls and **intelligent Profi-Tools**.

Some people feel like they're in an airport tower.

VEHICLE CONTROL CENTER OFFER



- Individual analysis of the requirements
- All stations under control at all times

- Shortened reaction times for fast action
- Perfect visualization of all processes
- Handmade control room furniture from Germany
- Spatial planning including 3D representation



Practical examples: Control room vehicle control

The job in the central **control center of a vehicle manufacturer** is not for the faint of heart.

Several hundred individual stations can be monitored closely.

If, for example, a supplier has a problem with a component, **fast and clever action** by the employees is the top priority.

To achieve this, the virtual IT reliably supports the **control in 24/7 operation**.

JST has an **excellent wealth of experience** in the **project planning of control stations in vehicle control, production and logistics**.

We will be happy to put you in touch with the respective contact person.

AUDI AG re-equips control center for central vehicle control

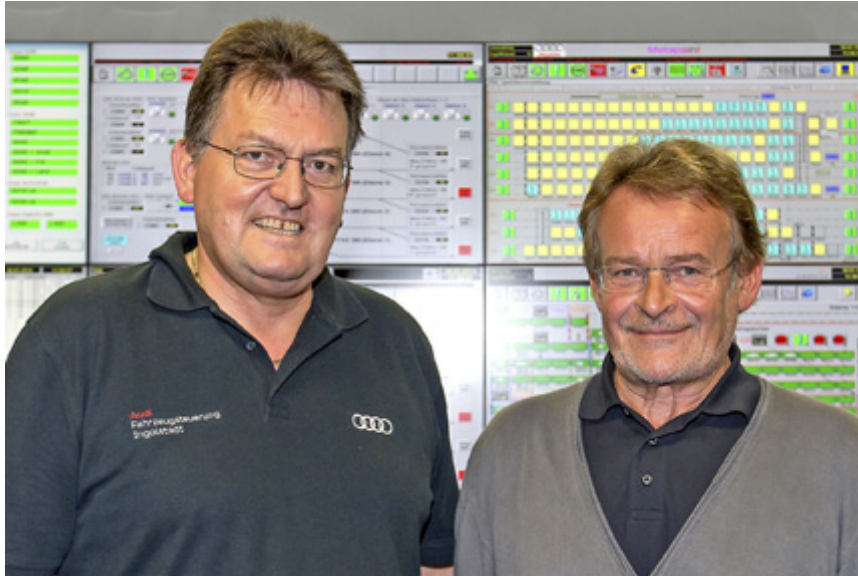
Stylish limousines, sporty allrounders and sleek coupes – more than 2,500 cars roll off the

production line at the Audi plant in Ingolstadt every day, in 2013 more than 570,000 cars were produced here.

To ensure that production never comes to a standstill, more than 30 employees in three shifts ensure that everything runs smoothly.

Jungmann Systemtechnik – JST – has created the ideal conditions for this.

TO THE PROJECT



Together with her team, they are pleased about the successful commissioning of the new control center:

Werner Mengert (left) / Heinz Braun (right)

Responsible for IT scopes in the department and planning of the project / former head of vehicle control



Digital upgrade for the "brain" at Volkswagen

Within the Volkswagen factory it is called "the brain of the factory": the FIS control center.

FIS – that stands for vehicle information and control system.

This is exactly what the Wolfsburg control center is all about.

The entire vehicle production process is monitored and controlled from here; from the receipt of orders for the plant to the entry into the assembly lines.

It is easy to understand that technology and ergonomics must meet the highest standards.

With the support of the control room specialists from JST – Jungmann Systemtechnik a comprehensive update has now been realized.

TO THE PROJECT



Volkswagen

"We simply wanted to be able to use the optimal software solutions that allow us to act quickly"

Hilmar Schimenas

Head of Operational Vehicle Control Center at Volkswagen in Wolfsburg



Production control center completely new equipped

The monitoring of around 2,000 computer systems is the focus of the employees at Audi's so-called "MMS" control center in Ingolstadt.

MMS – stands for Manufacturing Management System.

Behind this is the permanent testing of all steps that are necessary to produce the various models.

The new control center was equipped by the control room specialists from Jungmann Systemtechnik.

TO THE PROJECT



Positive feedback for the JST performance in the Audi control room - from left:

Alan Haydt, Gerhard Sporer, Jürgen Schneider (from left to right)

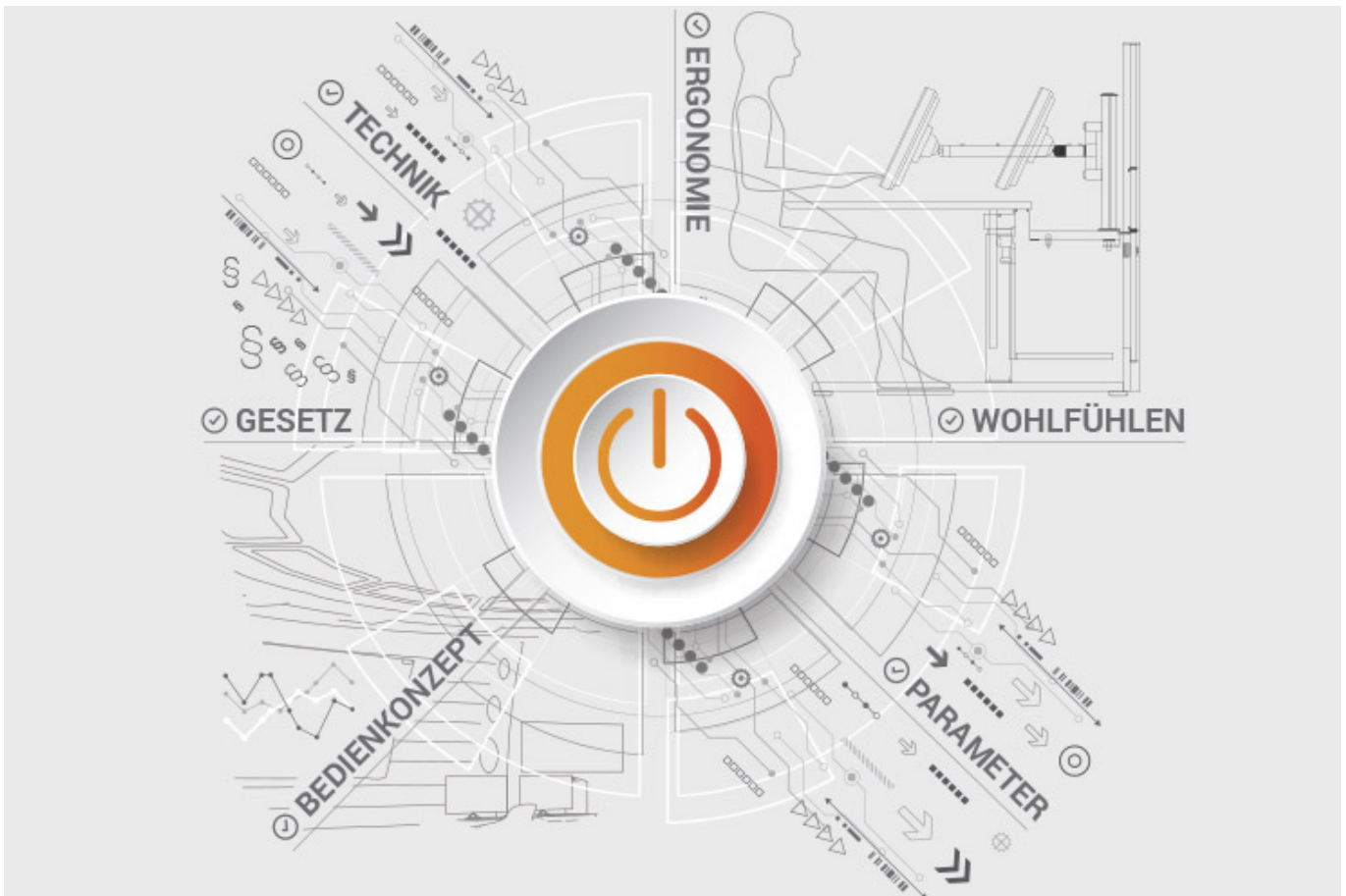
Head of maintenance processes and systems engineering / control center coordination /
project manager



ALL PROJECTS

JST product overview: Think of everything!

Control room vehicle control with the following components



Analysis and planning of your control room

Are you planning changes in your control room?

Or would you like to bring a breath of fresh air into your control room?

Then use the proven planning packages or the free of charge online analysis from JST.

Our experts support you according to BAUA: Study and all important standards and guidelines.

[More about free analysis](#)



Large screen technology – react faster!

Proactively present important information to the right people before an incident can have a major impact. With scalable large screen walls based on LC displays and cube technology, we will also find the right large screen system for 24/7 operation for you!

More about the JST large screen technology



myGUI® – User interface for

Large screen system, workplace & infrastructure

The intuitive myGUI® user interface in the 3D layout of your control room offers highest ease of use of your MultiConsoling® system.

With one click you can operate workstations, monitor walls and infrastructure – always absolutely safe and outstanding in stressful situations.

[More about the myGUI®](#)



MultiConsoling® – the

Control room switchboard

MultiConsoling® is the highly available control center to connect all signals of your systems with the monitors at the operator station and on the monitor walls.

The transmission takes place in real time and no software is required on your computers.

[More about the MultiConsoling®](https://www.jungmann.de/)



Control room furniture: ergonomic operator consoles, Recaro operator chair, AllMedia Conference System

Furniture and technology are available from JST from one source.

The height-adjustable and highly stable Stratos operator consoles and matching surrounding furniture form the ergonomic basis for your control room.

[More about the control room furniture](#)



Large screen control with graphic controller

With the IP-based graphics controller you can get your monitor wall going.

The graphics controller records all video signals via the IP network simultaneously and distributes them at any point and in any scale on the large screen wall.

[More about graphic controllers](#)



PixelDetection® – the operator's eye

Shorten your reaction times!

With PixelDetection® you receive the right alarm at exactly the right moment and always keep an overview. Proven for many years and repeatedly awarded, PixelDetection® is also called the “artificial eye of the operator”.

[More about PixelDetection®](https://www.jungmann.de/)



JST myLogin® – the operator's login

JST myLogin® is a revolutionary solution that allows you to log on and off centrally and quickly at all operator workstations with your company ID card.

The login/logout process only takes a few moments.

If desired, your personal arrangement of the screen contents can also be saved.

[More about myLogin®](#)



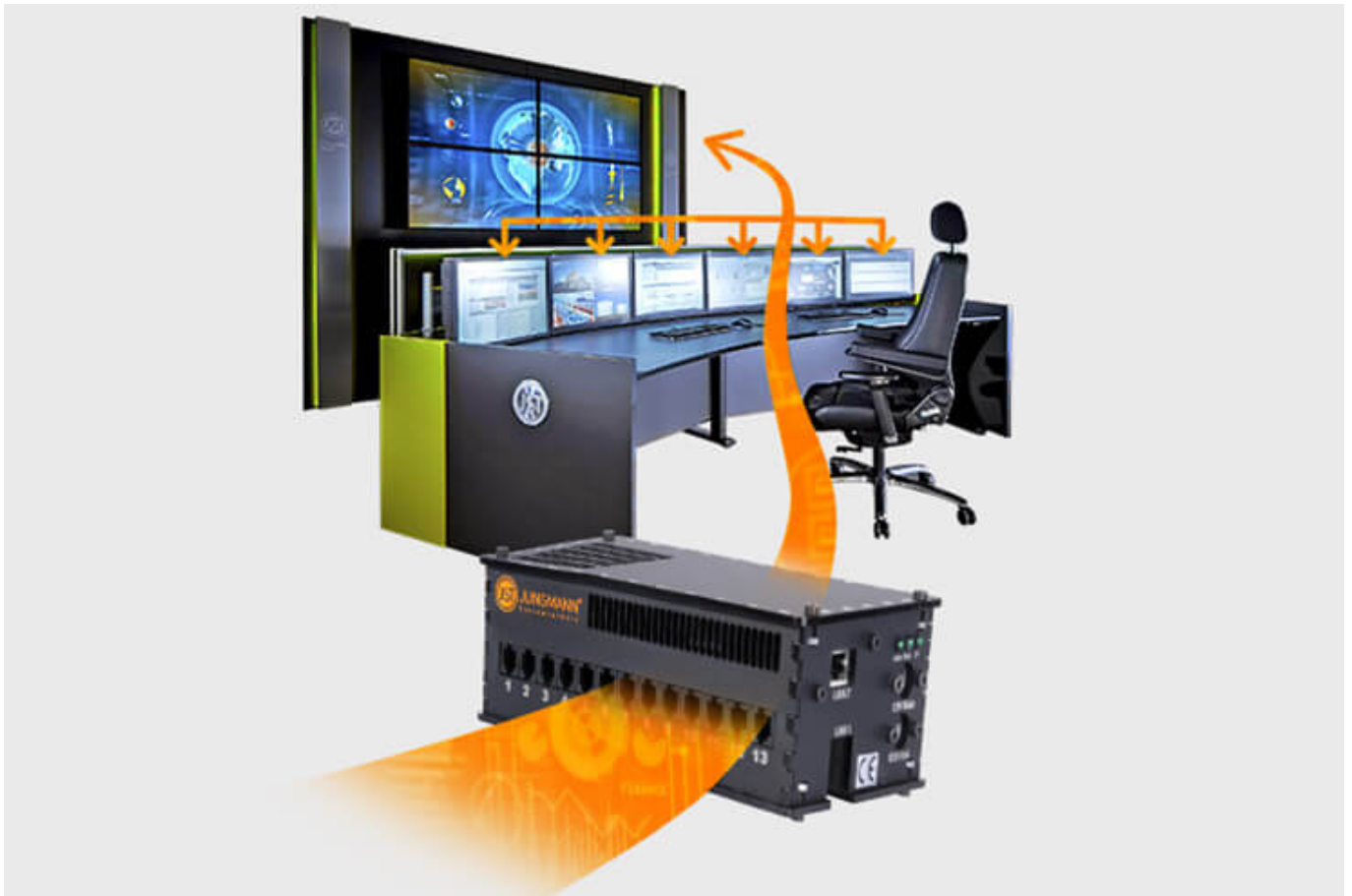
CockpitView – the operator’s dashboard

Create dashboards with content from different computers on different networks!

CockpitView offers you the perfect overview of your most important applications at a glance.

With CockpitView you stay in control and can reduce monitors at the workplace or even the large screen system.

[More about CockpitView](#)



Automation for video walls and

Operator workstations

With the JST CommandBox you can monitor circuits, relays, audio signals, and much more. and have them automatically switched on at defined workstations or on the monitor wall in the case of critical values.

The application possibilities are almost limitless!

[More about ControlRoom-Automation](#)



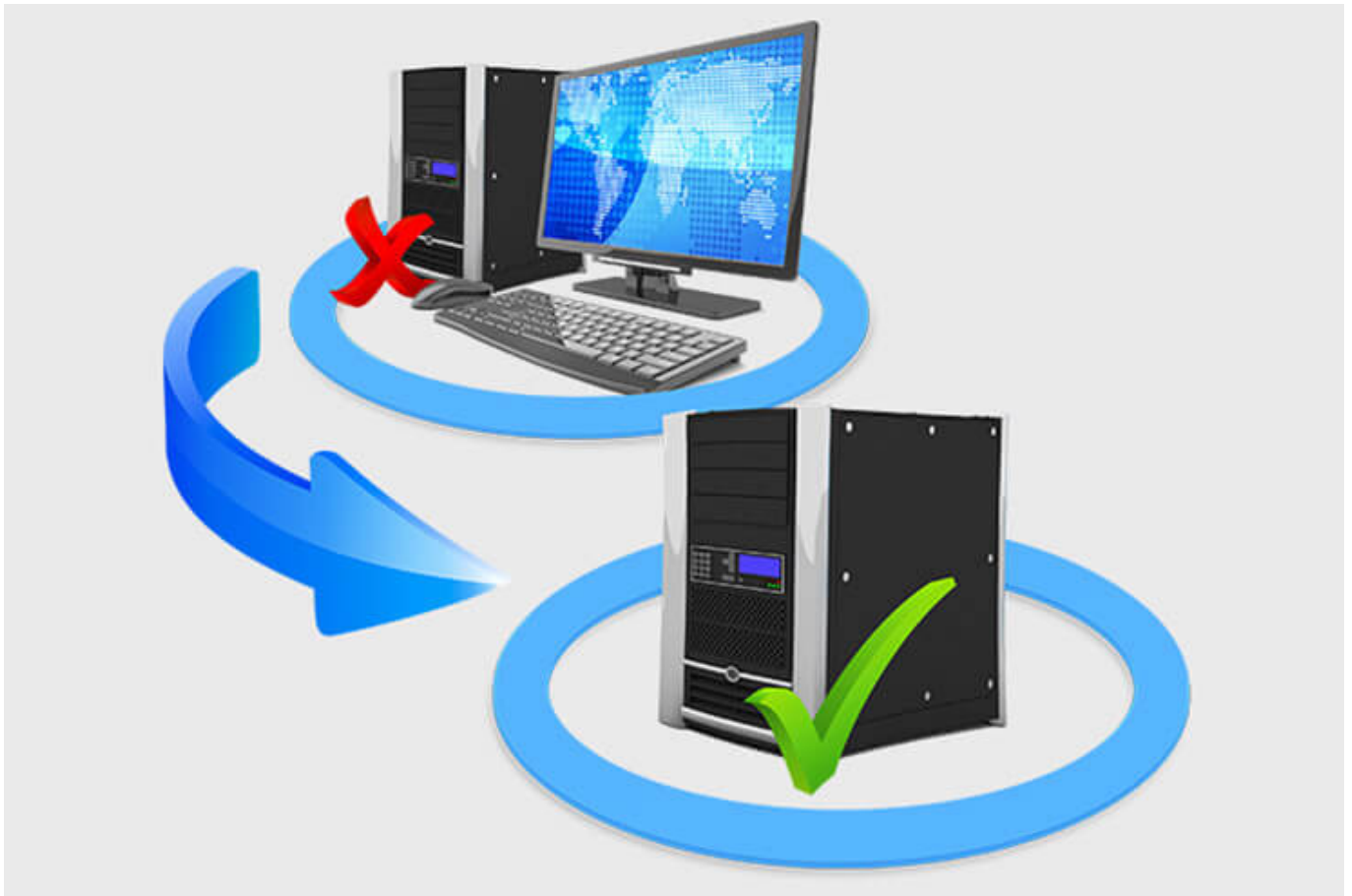
Control room remote: connection of

decentralized systems and locations

The optional remote interface of the JST systems allows you to visualize and operate remote computers and entire control rooms.

Even complex emergency scenarios for backup control rooms can be realized!

[More about ControlRoom-Remote](#)



Computer outsourcing and

PC remote control

By outsourcing the computers from the control room to the technical room, you reduce the heat load and create more space in the employees' legroom.

Further advantages are the central administration of the computers and the physical access protection in the secured technical room.

[More about computer outsourcing](#)



Optional service and maintenance packages

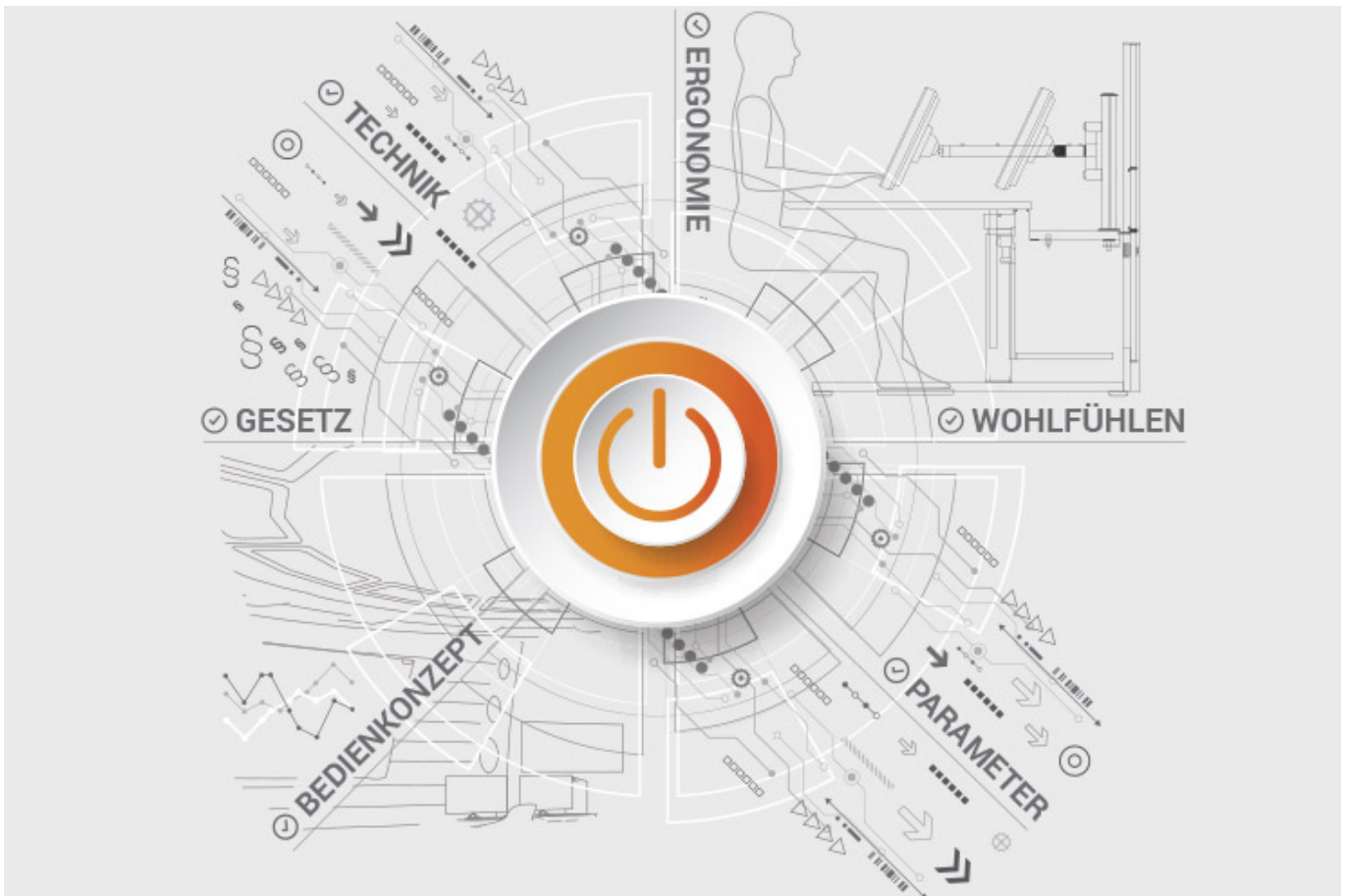
To ensure that your control room is as available as you need it to be, we offer availability assurance packages in various scopes and versions.

You will receive tailor-made solutions that support your market and competitive success.

[More about service from JST](#)

JST product overview: Think of everything!

Control room vehicle control with the following components



Analysis and planning of your control room

Are you planning changes in your control room?

Or would you like to bring a breath of fresh air into your control room?

Then use the proven planning packages or the free of charge online analysis from JST.

Our experts support you according to BAUA: Study and all important standards and guidelines.

[More about free analysis](#)



Large screen technology – react faster!

Proactively present important information to the right people before an incident can have a major impact. With scalable large screen walls based on LC displays and cube technology, we will also find the right large screen system for 24/7 operation for you!

More about the JST large screen technology



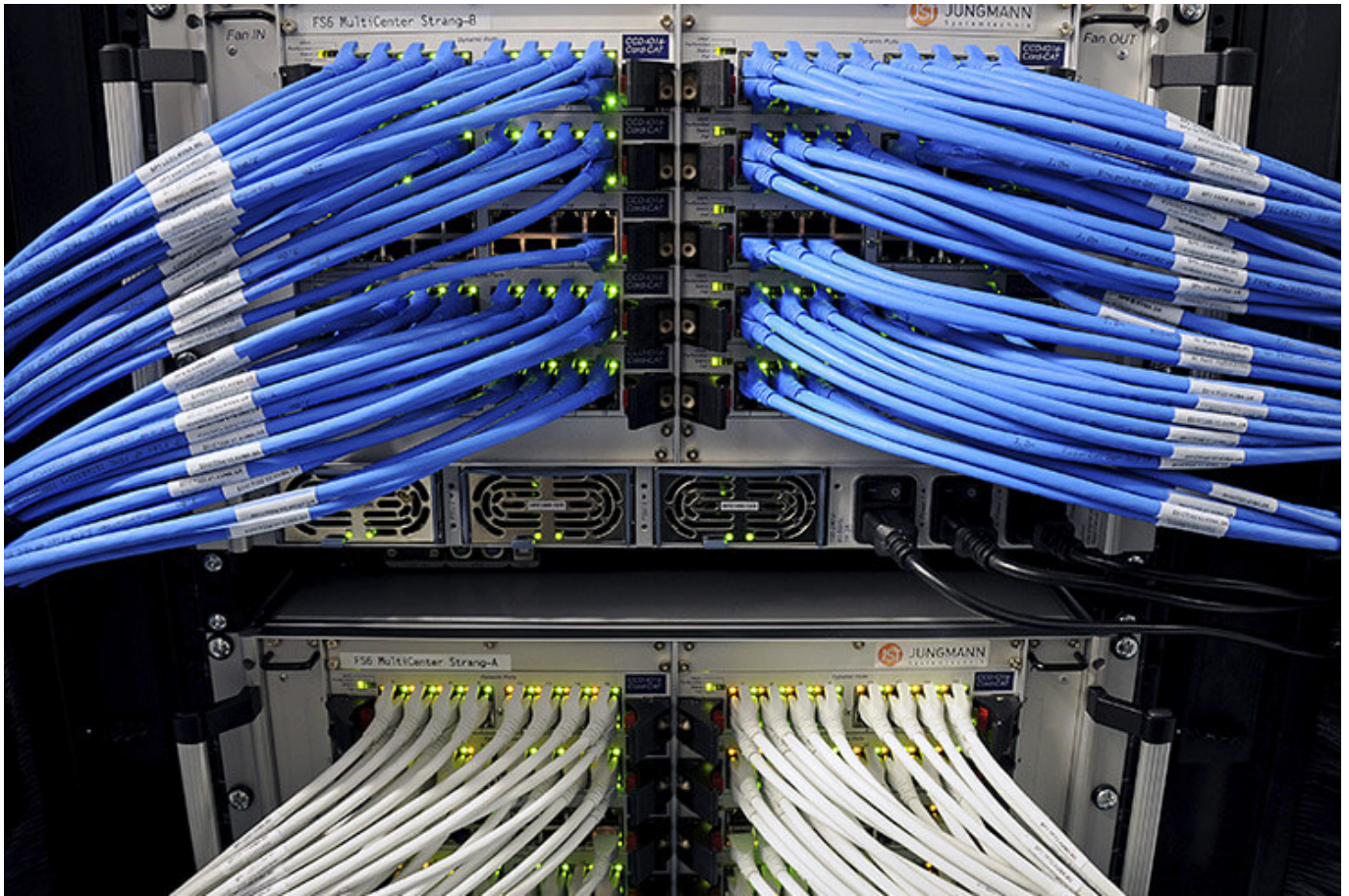
myGUI® – User interface for

Large screen system, workplace & infrastructure

The intuitive myGUI® user interface in the 3D layout of your control room offers highest ease of use of your MultiConsoling® system.

With one click you can operate workstations, monitor walls and infrastructure – always absolutely safe and outstanding in stressful situations.

[More about the myGUI®](#)



MultiConsoling® – the

Control room switchboard

MultiConsoling® is the highly available control center to connect all signals of your systems with the monitors at the operator station and on the monitor walls.

The transmission takes place in real time and no software is required on your computers.

[More about the MultiConsoling®](#)



Control room furniture: ergonomic operator consoles, Recaro operator chair, AllMedia Conference System

Furniture and technology are available from JST from one source.

The height-adjustable and highly stable Stratos operator consoles and matching surrounding furniture form the ergonomic basis for your control room.

[More about the control room furniture](#)



Large screen control with graphic controller

With the IP-based graphics controller you can get your monitor wall going.

The graphics controller records all video signals via the IP network simultaneously and distributes them at any point and in any scale on the large screen wall.

[More about graphic controllers](#)



PixelDetection® – the operator's eye

Shorten your reaction times!

With PixelDetection® you receive the right alarm at exactly the right moment and always keep an overview. Proven for many years and repeatedly awarded, PixelDetection® is also called the “artificial eye of the operator”.

[More about PixelDetection®](https://www.jungmann.de/)



JST myLogin® – the operator's login

JST myLogin® is a revolutionary solution that allows you to log on and off centrally and quickly at all operator workstations with your company ID card.

The login/logout process only takes a few moments.

If desired, your personal arrangement of the screen contents can also be saved.

[More about myLogin®](#)



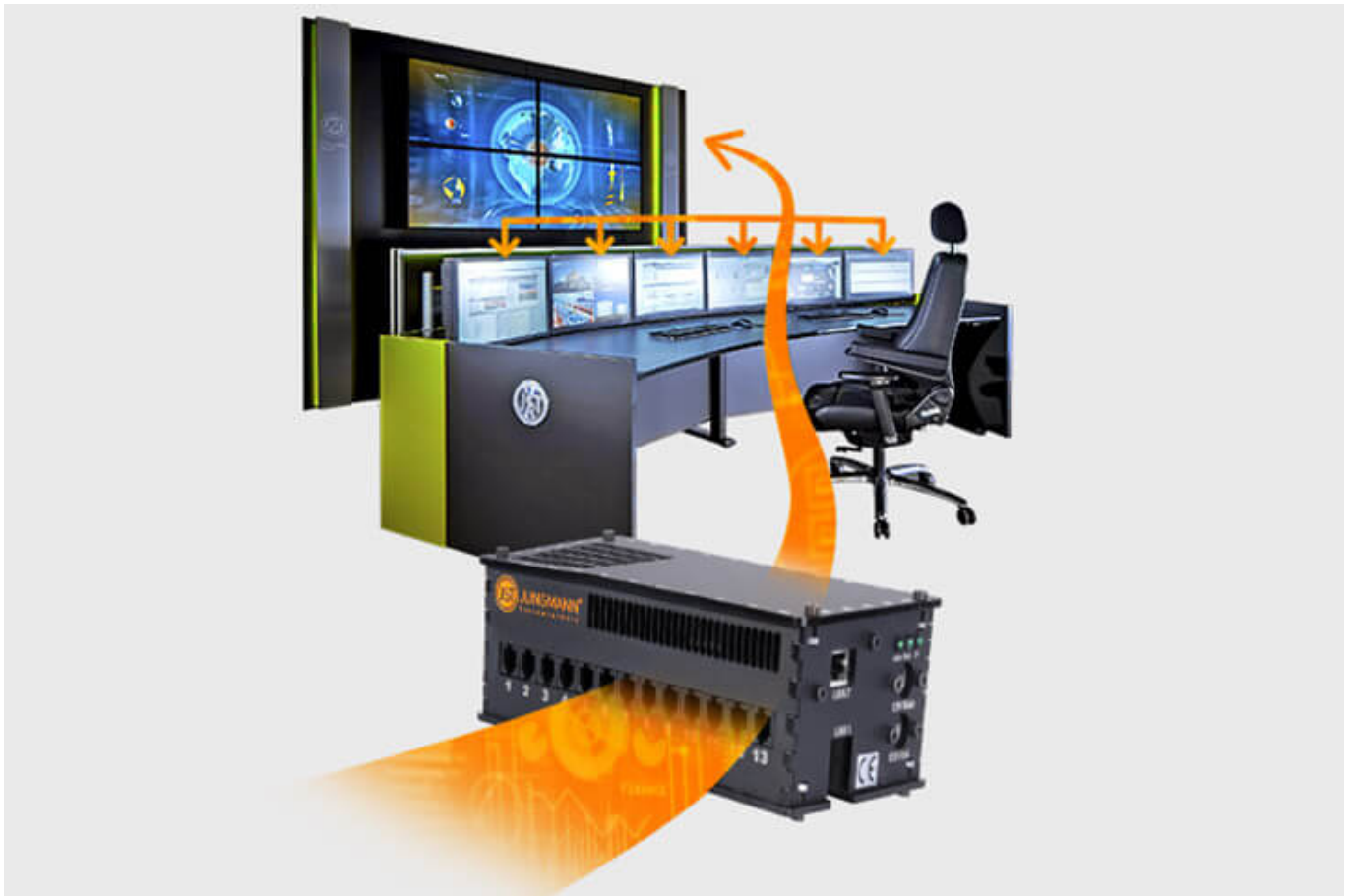
CockpitView – the operator’s dashboard

Create dashboards with content from different computers on different networks!

CockpitView offers you the perfect overview of your most important applications at a glance.

With CockpitView you stay in control and can reduce monitors at the workplace or even the large screen system.

[More about CockpitView](#)



Automation for video walls and

Operator workstations

With the JST CommandBox you can monitor circuits, relays, audio signals, and much more. and have them automatically switched on at defined workstations or on the monitor wall in the case of critical values.

The application possibilities are almost limitless!

[More about ControlRoom-Automation](#)



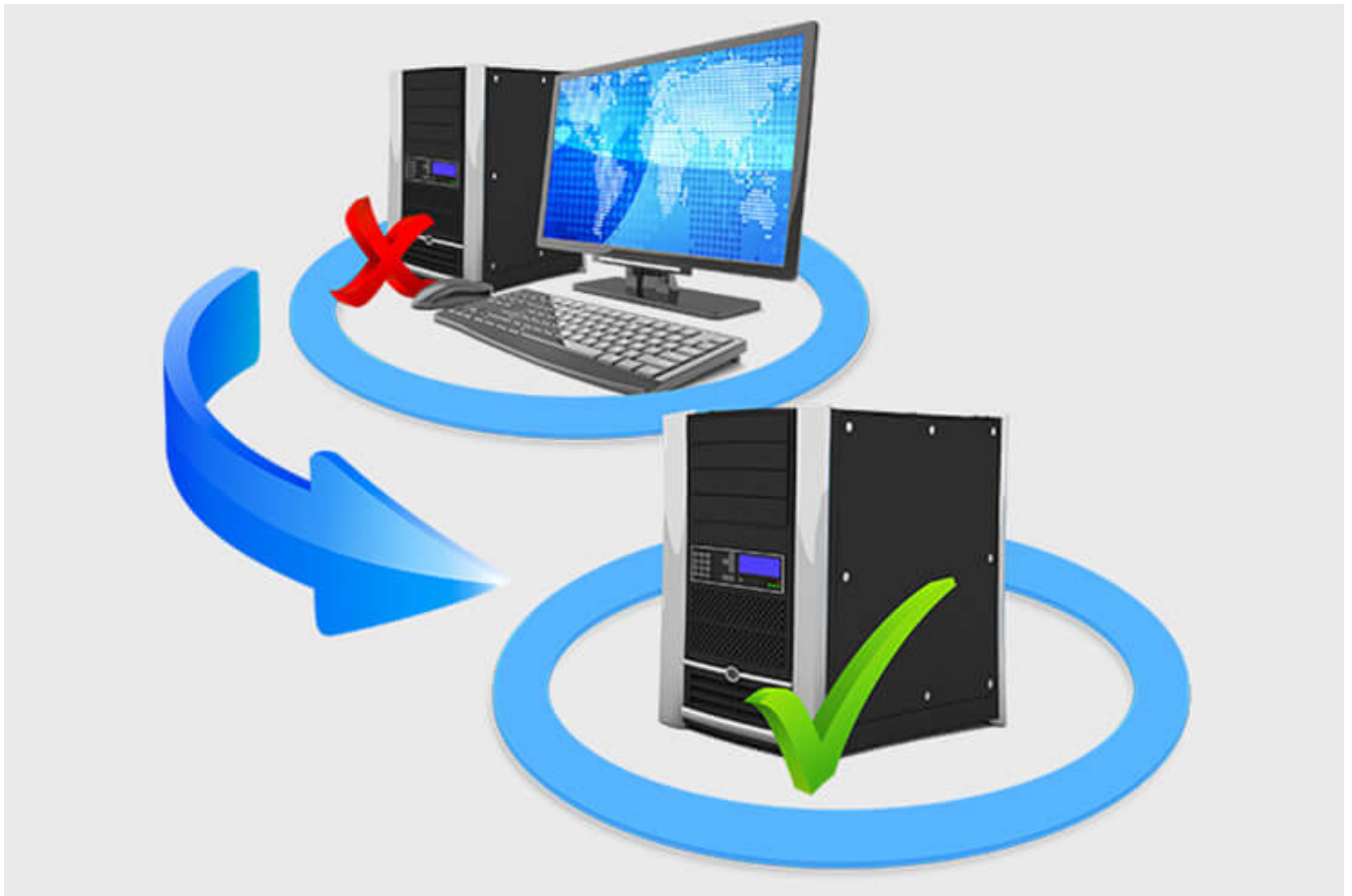
Control room remote: connection of

decentralized systems and locations

The optional remote interface of the JST systems allows you to visualize and operate remote computers and entire control rooms.

Even complex emergency scenarios for backup control rooms can be realized!

[More about ControlRoom-Remote](#)



Computer outsourcing and

PC remote control

By outsourcing the computers from the control room to the technical room, you reduce the heat load and create more space in the employees' legroom.

Further advantages are the central administration of the computers and the physical access protection in the secured technical room.

[More about computer outsourcing](#)



Optional service and maintenance packages

To ensure that your control room is as available as you need it to be, we offer availability assurance packages in various scopes and versions.

You will receive tailor-made solutions that support your market and competitive success.

[More about service from JST](#)

Was möchten Sie als Nächstes tun?

Ich möchte

- [das kostenfreie Praxisbuch der Kontrollräume anfordern](#)
- [einen Rückruf für eine unverbindliche Beratung](#)
- [den Kontrollraum-Simulator in Buxtehude besuchen](#)
- [eine digitale 360°-Tour in einem Kontrollraum erleben](#)

<https://www.jungmann.de/>

- mehr über Kontrollräume auf dem ko:mon Kongress erfahren

We will be happy to answer your questions about the control center vehicle control

0800-777 8 666