

MultiConsoling®

THE OPERATOR'S HAND

myGUI®
THE OPERATOR'S INTERFACE

Your network-independent real-time control center:
You can connect all the sources you want – from the computer to the camera – with the monitors at the work station, large-format display wall and even the local crisis room.

ONLY AT
JST

Need more information?

Call us on

 **+49 4161 – 54044-0**

or visit our website: www.jungmann.de



MultiConsoling® controls your work stations and the display wall in real time independently of the IP network

MultiConsoling® combines the features of a graphic controller with the advantages of a **sophisticated matrix system** and allows a highly available controlling of your video wall.

With the **myGUI® user interface**, every operator will have control of the large display and work stations well in hand in just four minutes!

MultiConsoling® – developed by JST

Once you've got to know this fast, totally flexible working method, you'll never want to do without it again. The combination of the **"MultiCenter" hardware component** and the unique **myGUI® software** provides every function you need for optimum control room operation.



 **The hardware component:**

All computers are connected, with keyboard, mouse, monitor and sound card if provided, to the "heart" of the JST MultiConsoling® – the MultiCenter. Cameras and TV receivers can also be linked with the MultiCenter. The MultiCenter comes with the MultiConsoling® API so that it can be controlled by the myGUI® software. The MultiCenter is thus fully tuned to all sorts of different working methods in the control room.

- ✓ **Fast:** Imaging and keyboard/mouse operation in real time
- ✓ **Secure:** Transmission without network
- ✓ **Flexible:** No additional software on your source computers, immediate implementation
- ✓ **A safe investment:** Totally independent of the operating system of the source computers
- ✓ **Scalable:** Display on operator station monitors and on DisplayWalls for the entire control room team
- ✓ **Free seating:** The operator can swap work stations in just a few seconds



 **The software component:**

The crucial hub of a MultiConsoling® system is the **myGUI® graphical user interface**. This can either be displayed on a work station monitor or on the **innovative CommandPad**, a concept developed exclusively by the JST ideas factory. With the CommandPad, staff can keep a constant eye on even the most complex control room technology using the graphical user interface.



- ✓ **Intuitive:** Designed in the 3D layout of your control room
- ✓ **Touch optimized:** Activate all systems instantly at the touch of a finger
- ✓ **Clearly laid out:** Just one mouse/keyboard or CommandPad at workstation
- ✓ **Secure:** Superior handling in stressful situations
- ✓ **Comprehensive:** Operation of workstations, large-format systems, cameras, meeting rooms, media technology and much more
- ✓ **Compatible:** No installation on your computers necessary

Effortless control of all systems - with the new myGUI®

Secure, self-explanatory, simple – that's how easy it is to sum up the system controls in the control room with myGUI®. **Thanks to the new design it's now even more effective in field tests.**

The myGUI® is already being used as the user interface for the MultiConsoling® real-time control system in hundreds of control rooms. **The clear, intuitive layout of the graphical elements makes effortless and superior control of the entire infrastructure in the control room possible.** The vivid design reflects a sculpted, customized **3D layout** of the respective working environment.

You will be in control of all systems. With one click you can control workstations, large-display technologies, cameras, meeting rooms, lighting, media, air conditioning and building services engineering. **The system can be operated using the mouse, CommandPad and touch commands.**

This is new:

The idea: new layout, new flexibility.

The Graphical User Interface has been updated and **optimized for touchscreens** alongside the desktop version. At the same time, users benefit from maximum visibility.

The result: A modern user interface style that makes the handling of MultiConsoling® and thus the control of the entire control room infrastructure a cinch – no matter if it's with a mouse and keyboard or the touch version.

Clearly structured text buttons and source lists – even for the structures of external rooms – make all systems readily available with the touch of a finger.



CommandPad
THE OPERATOR'S TOUCH INTERFACE



One look, one click – CommandPad gives you control in seconds

With the CommandPad, a **control panel** specially optimized for 24/7 operation, the operator is always able to keep an eye on the myGUI® user interface and thus the entire control room control system.

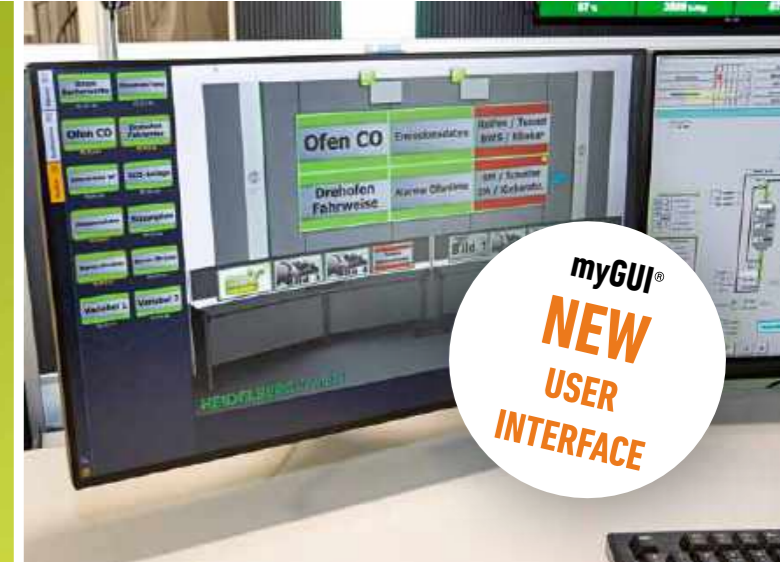
The decisive advantage of this component: An endless selection of pre-defined myActions is available, making tiresome activation of individual systems, for example during shift transfers, a thing of the past.

In the built-in version, the CommandPad is **integrated directly into the operator's console**, leaving sufficient space for working with a mouse and keyboard. In order to also be able to benefit from the panel's compelling advantages with regard to existing furniture, a special surface-mounted variant was also developed, which is suitable for external meeting rooms, among other things.

Practical examples

JST MultiConsoling® concept:

- ☑ **MultiCenter** in the technology room
- ☑ **myGUI®-Software** in the control room



- Mouse operating
- Touch operating
- Timer
- CommandPanel
- Voice control
- Alarms

*Automated, for example using PixelDetection®, traps, I/O contacts, external alarm tools



Work station and large screen control with MultiConsoling®

1. The hardware components of MultiConsoling®

All sources (e.g. computers, cameras, SAT receivers, etc.) are installed in a **technical room**, away from the control room. The advantage for you: less heat and noise in the control room.

MultiConsoling® works by accessing the sources to be displayed **without any network**, which means that it is highly available, secure and without any loss of image and audio quality. Transmission of mouse and keyboard entries is **guaranteed** to be **instant**.

The technical room contains grabbers, the MultiCenter, computers and myGUI® controller.

B Grabbers pick up the signals from the remote sources and forward these to the MultiCenter.

C MultiCenter provides up to 288 ports, depending on the model series, to connect the grabbers (computers) and the MultiConsoles.

No additional software required on your source computers

In most cases, running external software on sensitive sources such as alarm and process computers is not allowed, for warranty and security reasons. The **myGUI® database** is therefore only installed on a **myGUI® controller**.

noIP variant

Maximum security for the protection of KRITIS against a cyber attack: MultiConsoling® with noIP technology

The superbly effective solution from JST: consistent separation of the **office network** (internet), which is essential for employee communication, from the system **production network**. That means that the production network – of a power station, for example – works independently of the IP network.

So if a hacker should unexpectedly get as far as the **office network**, it is impossible to use the network to access the control room controls in the **production network** and thus the controls of all the systems.

1 TECHNICAL ROOM

A Remote sources
(computers, TV receivers, other hardware)

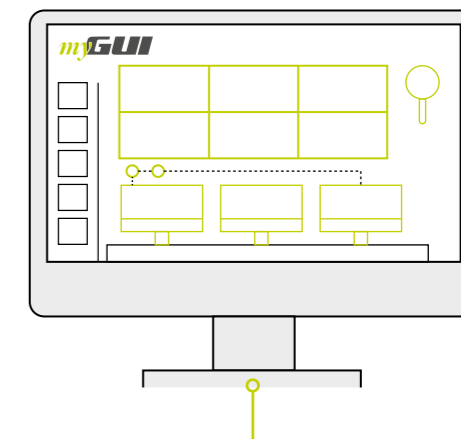
The **mouse, keyboard, monitor and audio** are connected to a MultiConsole.

D MultiConsoles are housed in the control room. They are the receivers and are used to flexibly connect remote sources to display walls and work station monitors.

ACCESS DENIED

2 CONTROL ROOM

As soon as you drag a source with your Live Icon (real-time preview) to a required field in the myGUI®, the source can actually be seen on the desired display (**large-format screen or work station monitor**) and can be used in real time. All sources can be shifted from place to place or even operated by several operators at the same time. The operator can change work station in just a few seconds.



Respond instantly to alarms with the CommandButton Box

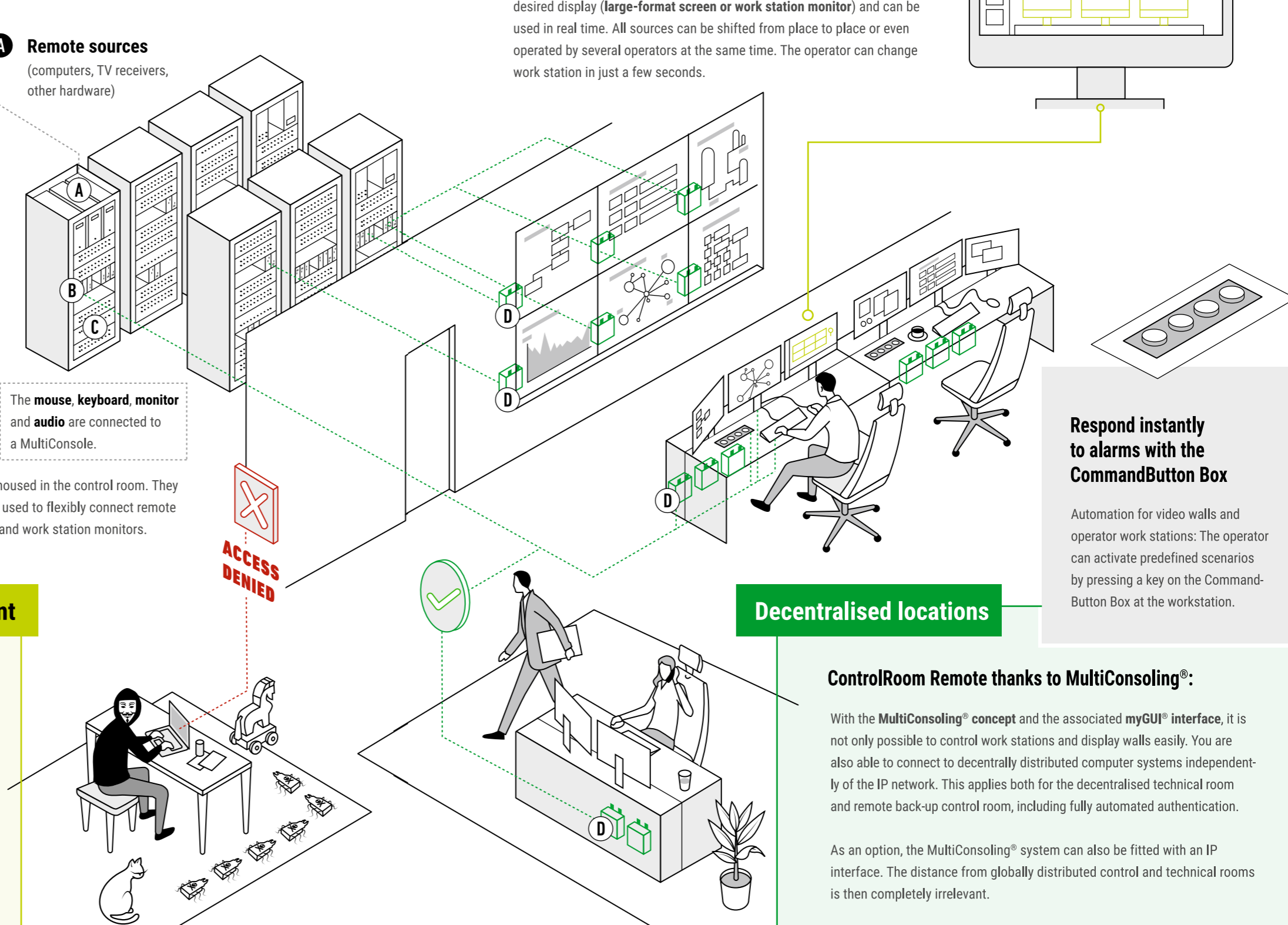
Automation for video walls and operator work stations: The operator can activate predefined scenarios by pressing a key on the CommandButton Box at the workstation.

Decentralised locations

ControlRoom Remote thanks to MultiConsoling®:

With the **MultiConsoling®** concept and the associated **myGUI®** interface, it is not only possible to control work stations and display walls easily. You are also able to connect to decentrally distributed computer systems independently of the IP network. This applies both for the decentralised technical room and remote back-up control room, including fully automated authentication.

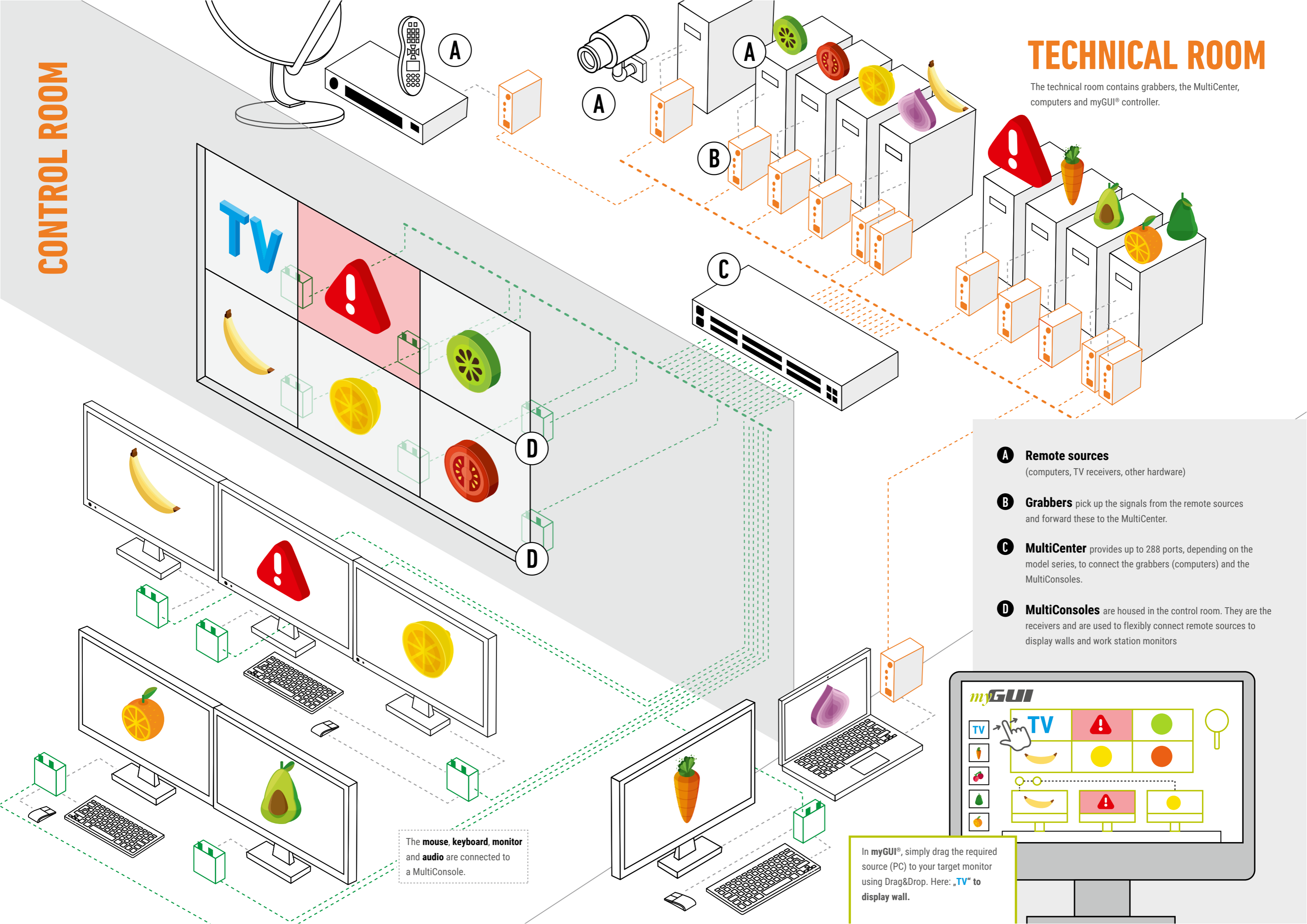
As an option, the MultiConsoling® system can also be fitted with an IP interface. The distance from globally distributed control and technical rooms is then completely irrelevant.



CONTROL ROOM

TECHNICAL ROOM

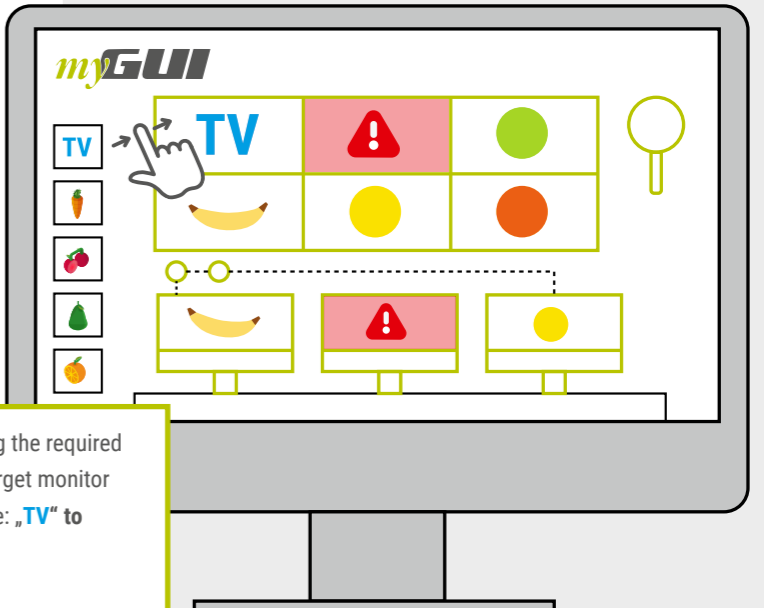
The technical room contains grabbers, the MultiCenter, computers and myGUI® controller.



- A Remote sources**
(computers, TV receivers, other hardware)
- B Grabbers** pick up the signals from the remote sources and forward these to the MultiCenter.
- C MultiCenter** provides up to 288 ports, depending on the model series, to connect the grabbers (computers) and the MultiConsoles.
- D MultiConsoles** are housed in the control room. They are the receivers and are used to flexibly connect remote sources to display walls and work station monitors

The mouse, keyboard, monitor and audio are connected to a MultiConsole.

In myGUI®, simply drag the required source (PC) to your target monitor using Drag&Drop. Here: „TV“ to display wall.



ControlRoom Simulator

DISCOVER THE FUTURE

Experience tomorrow's work station standards today: innovative large-format screen systems and their control, MultiConsoling®, PixelDetection®, CockpitView, Stratos X11, intuitive touch-screen operation, the latest security concepts, interactive conference table, creative lighting design, acoustic concepts, etc.



ON SITE

TacticTable
CONTROL THE SITUATION



Book a workshop now!

+49 4161 – 54044-0

Use our **remote workshops** for turbo entry into the JST control room world - without travel time.

On-site appointments can still be booked as well.



VIRTUAL

Having a vision of the future is good. Experiencing it is better!

Off we go on a big-screen hunting.

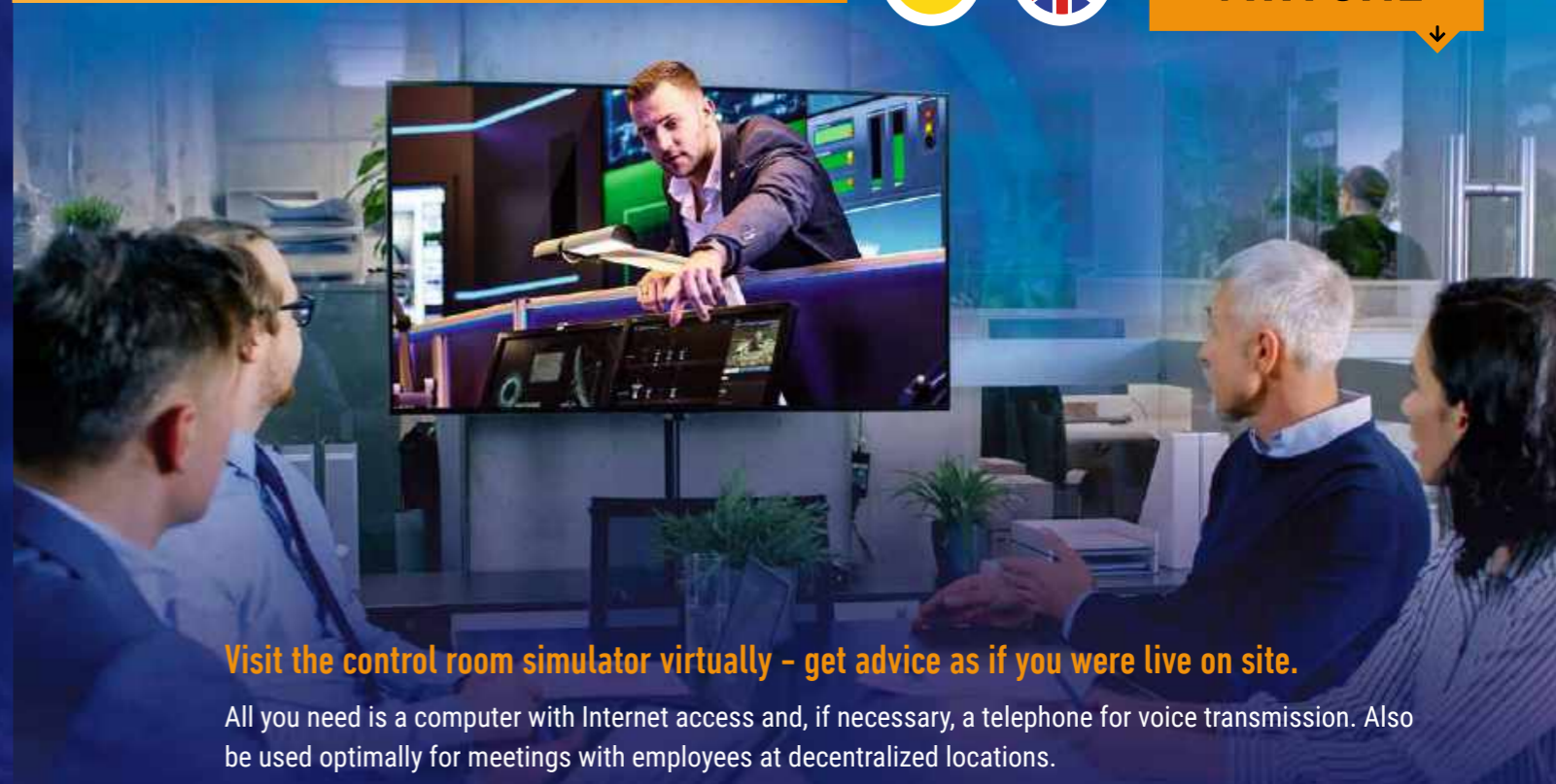
Take a look into the future and see the latest large screen technology. From the interactive Multi Touch Screen to the DisplayWall, you can expect technology at the highest level, of course also in terms of software. Our JST-PixelDetection® software shows you the automated alarm activation on the large screen wall. The alarm and management tools you use are only displayed when they require your attention; reaction times are drastically reduced!

Enjoy your new freedom.

In the Control Room Simulator you can actively test the flexible workstation interconnection Multi-Consoling® and experience the advantages close up.

Discover unimagined comfort.

Test smart solutions for team-based control station activities: Specialized furniture such as the Stratos X11 control room desk, operator chairs for continuous 24/7 continuous operation or the new Tactic-Table. Discover acoustic large screen wall cladding, ConferenceDesk with various PC connection interfaces, meetingpoint and much more.



Visit the control room simulator virtually - get advice as if you were live on site.

All you need is a computer with Internet access and, if necessary, a telephone for voice transmission. Also be used optimally for meetings with employees at decentralized locations.

Thanks to state-of-the-art camera technology, we can advise you live from the control room simulator. You and your team experience an online tour of our control room simulator with our experts - also in parallel from variable locations, in German or English.

Guides, checklists, practical examples, solutions,
and specialist articles on setting up your control
room, control station, control center and control point

I WOULD LIKE TO KNOW MORE ABOUT
"THE GREAT PRACTICAL BOOK OF CONTROL ROOMS"



Need more information?

Call us on

 **+49 4161 – 54044-0**

or just check out our website!

www.jungmann.de



JUNGMANN®
S y s t e m t e c h n i k