

# JST MultiStreaming®

TRANSFER YOUR DESK

## Convincing facts for the use of JST MultiStreaming® in the control room

**Outstanding performance:** Switch any source to any desired screen. Only one mouse and keyboard for all applications. Intuitive operation with the myGUI® interface. And all this in a cost-saving way and with a sharpened focus on security. Get to know the convenient control room operation with JST MultiStreaming®!



Here you can find out what makes JST MultiStreaming® so unique

## Security

- ✓ JST MultiStreaming® transforms the control station into a high-availability real-time control center that **can be scaled flexibly in terms of „security“**. The options range from the network-based variant to hybrid concepts and hardware-based structures with high 256-bit encryption to fulfill even the most stringent CI requirements.
- ✓ **Full redundancy of the entire system architecture** possible with low financial outlay.
- ✓ The **myGUI® user interface** gives the operator absolute operating safety even in stressful situations. The representation of the control station environment as a clear 3D visualization enables intuitive handling.
- ✓ Today, remote connections must be convenient and secure at the same time. **Access should even withstand a risk analysis.** By logging on with the myGUI®, JST MultiStreaming® meets both requirements: Secure dial-in through two-factor authentication and convenient handling thanks to an intuitive user interface. Another advantage: With JST MultiStreaming® **remote connections are realized without software installation** on the client PC.
- ✓ Networking and accessing sites around the globe becomes child's play. Remote control rooms can be easily bundled into one central command station if required. Moreover, **geo-redundancy creates additional security.**



# Flexibility

- ✓ **Switch any source flexibly to any monitor?** With JST Multi-Streaming® you call up every application of the control station on any desired monitor. Whether video wall or workstation display - the operator decides what is important for him at the moment.
- ✓ **Only one mouse/keyboard unit for operating all sources** of the control station. Rigid assignments and workstation changes for system access were yesterday.
- ✓ **With the SplitView function**, different systems can be flexibly combined on the displays of the video wall and operated without delay in real time! Size, placement, number - you define the presets and scale them according to your requirements.
- ✓ **Dynamic SplitControl:** The user constructs a dynamic arrangement of the most important sources directly in his user interface. The systems can not only be modified as required, but also operated directly.
- ✓ **Important team info via text ticker:** With a selected message line, all employees receive current information and alerts at the same time.
- ✓ **Looking to expand your facility?** Thanks to efficient compression and low bandwidth usage, conventional network switches are sufficient to scale to your needs.



# Cost efficiency

System management in the control room with JST solutions means: **You have the choice!** You decide which of three optional models is the right one for your requirements and budget.

**Variant A:** All sources of the control station are conveniently connected via the network. For all those who want to keep both costs and installation effort low, the **MultiStreaming software grabber** is recommended.

**Variant B:** You opt for the solution **MultiStreaming hardware grabber**. This ensures the integration of all systems without having to install additional software on the client computers.

**Variant C:** You **upgrade your existing MultiConsoling® system to a hybrid system** and thus consistently keep an eye on the TCO (Total Cost of Ownership). This combination of investment protection and technical upgrade allows you to use all the innovative features of MultiStreaming on the basis of the existing hardware components - an upgrade with the best of both worlds.

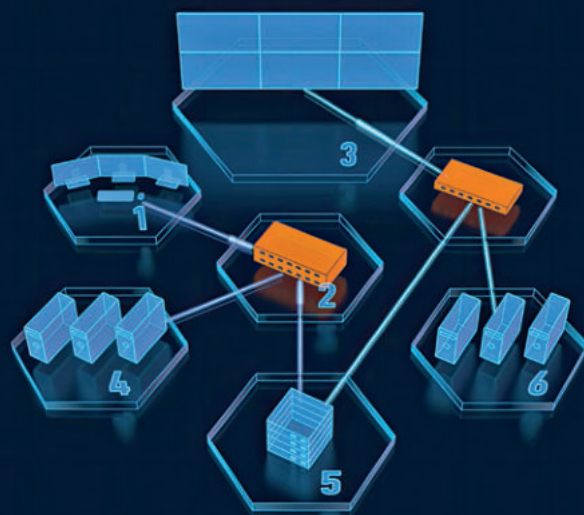
## Options of use

- ✔ **Effortlessly and confidently - with the intuitive myGUI®** (Graphical User Interface), control room operation via JST MultiStreaming® succeeds even for newcomers. The myGUI® has been tested and modified by hundreds of users and has thus become an indispensable solution.
- ✔ In combination with the **JST CommandPad®**, the operator has the myGUI® and thus the entire control station permanently in view. The control panel, which has been specially optimized for 24/7 operation, enables lightning-fast reactions. There is no need for tedious switching of individual systems. Thanks to predefined myActions, a tap of the finger is all it takes to gain instant control.
- ✔ The **CommandButton Box** is also available as an option. With the buttons integrated into the console interface, even complex scenarios are available at the push of a button. The individual switches are assigned individually and provide safety even in critical situations.
- ✔ Do you want to combine flexibility and performance? Create new possibilities for interaction in the control station? The **JST TacticTable®** offers a smart solution. Full integration into JST MultiStreaming® provides access to all sources and processes in the control room.

**JST MultiStreaming®**  
TRANSFER YOUR DESK



## Hybrid System



	JST MultiStreaming®	MultiConsoling®
Description	<p>network based control as <b>KVM IP streaming</b> solution</p> <p><b>complete outsourcing of source systems from the control center</b>; for example, to an air-conditioned and access-protected technical room, which is easily accessible for administration work</p> <p><b>source systems</b> optionally in combination with hardware grabbers, with installation of grabber software or with connections via VM</p> <p><b>console devices at the workstations</b>: neither heat nor noise pollution</p> <p><b>MultiStreaming network</b> connects Grabbers and console devices with each other. Therefore free interconnection of all control station sources to any available monitor</p> <p><b>flexible use of workstations</b> for all applications</p> <p><b>operation</b> of JST MultiStreaming® via the myGUI®</p>	<p>control room operation as a <b>classic KVM</b> solution</p> <p><b>complete outsourcing of source systems from the control center</b>; for example, to an air-conditioned and access-protected technical room, which is easily accessible for administration work</p> <p><b>source systems</b> optionally in combination with hardware grabbers or with connections via VM</p> <p><b>console devices at the workstations</b>: neither heat nor noise pollution</p> <p><b>MultiCenter</b> connects Grabbers and console devices with each other. Therefore free interconnection of all control station sources to any available monitor</p> <p><b>flexible use of workstations</b> for all applications</p> <p><b>operation</b> of JST MultiConsoling® via the myGUI®</p>
Location PCs/Sources	<b>placement in the equipment room</b> : safety, air conditioning, easy access for maintenance	<b>placement in the equipment room</b> : safety, air conditioning, easy access for maintenance
Operation	via <b>myGUI®</b> user interface and with <b>SplitView</b> directly in the frontend	via <b>myGUI®</b> user interface
Flexibility	<b>connection of any source</b> to any desired monitor; also multiple	<b>connection of any source</b> to any desired monitor; also multiple
Free Seating	✓	✓
Transmission protocol	<b>TCP/IP (network)</b> : Connection via standardized network between the devices	<b>proprietary</b> : connection of special hardware via manufacturer specific, not published protocol
Transmission medium	Standard Ethernet infrastructure	dedicated CAT5/6/7, or optical fiber cabling
Presentation Workstation/Videowall	<p>one source in real time per display,</p> <p>one source in real time on multiple displays (<b>BigPicture</b>),</p> <p>multiple sources in real time per display (<b>SplitView</b>),</p> <p>multiple sources in real time on multiple displays (<b>SplitView</b>)</p>	<p>one source in real time per display,</p> <p>one source in real time on multiple displays in fixed aspect ratio (<b>BigPicture</b>)</p>
Number Mouse/Keyboard	one per workstation	one per workstation
Operation video wall	starting from the workstations	starting from the workstations
Remote dial-in	✓ with low latency	✓ with latency due to IP conversion, additional hardware required
MouseHopping CockpitView® PixelDetection®	✓	✓
SplitView	✓	✗