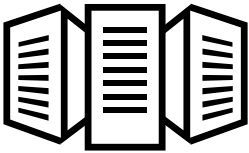


Optimise your control room and get perfectly equipped for the future

Any company that wants to optimise its control room must think first and foremost about the future. The ever accelerating **digital transformation**, the **elimination of security gaps** in hardware and software, and the **creation of the best possible working atmosphere** are all the focus of control room optimisation.

Take advantage of the know-how of the specialists at Jungmann Systemtechnik. Whether you want to optimise parts of the control room or the entire department. **From the analysis to the finished handover, we provide perfectly designed solutions** all from a single source, including our large-screen control system with MultiConsoling®.

OFFER CONTROL ROOM OPTIMISATION



axians

- Analysis of your needs in a workshop day

- Clearly defined concept for control room optimisation
- Investigation of the information hierarchy
- Review of the optimal seating arrangement
- Use of the latest monitor walls and reduction to the essential
- Computer relocation, sound insulation and air conditioning for a healthy indoor climate



Practical examples: Control room optimisation

JST has optimised countless control rooms. We understand how important it is to **identify potential problems in the system as quickly as possible and to act proactively** to ensure uninterrupted operation.

That is why we observe all safety requirements and place the highest demands on the final operating concept! Our reference reports contain various example projects. You are welcome to have a look around.

We will be happy to put you in touch with the appropriate contact person.

ICT experts use JST know-how for Network Operations Center

An international network, in-depth ICT (Information and Communication Technology) know-how and IT specialists who, with their practical solutions, have an eye on a market that is constantly changing – in the sign of the digital transition, Axians supports their customers in complex transformation processes. In order to fulfill this requirement even more efficiently, Axians has moved into a new domicile in Hamburg.



axians

"During the workshop, we were able to try everything out and determine: What makes sense? In this way, many good approaches developed, which eventually became a convincing concept. That was both helpful and very smart."

Oliver Schnau (right) // Lars Eberlein

Head of Service // NOC Team Leader (both Axians Networks & Solutions GmbH)



Optimised control room: Update for technology and appearance in the monitoring control center

“Bigger, nicer, cooler” – in a series of informative comparatives, Marius Förster sums up the advantages of the new s.Oliver control room. Having already placed the installation of its new control room in the hands of Jungmann Systemtechnik in 2013, the company decided once again to place its trust in the JST experts. In a second step, the update at the company headquarters in Rottendorf was also handed back to the Jungmann team.

GO TO PROJECT



s.Oliver®

"With the new control room we are now optimally equipped for the future."

Marius Föörster

Manager of the operational IT department



New level of monitoring in the data center control center

Growing monitoring tasks, increased demands on response times – a new era is about to dawn for the control center in the computer center of Finanzverwaltung Nordrhein-Westfalen. To be able to meet the increasing requirements, a completely new control center was implemented together with the control room professionals from JST – Jungmann Systemtechnik®.

GO TO PROJECT



FINANZVERWALTUNG
für Nordrhein-Westfalen

During a visit that took place in advance in JST's control room simulator: "The colleagues were delighted when they were able to try out the new possibilities directly on site."

Hans-Léo Tholen (3.f.r.)

Project manager and his team from the control center of the data center



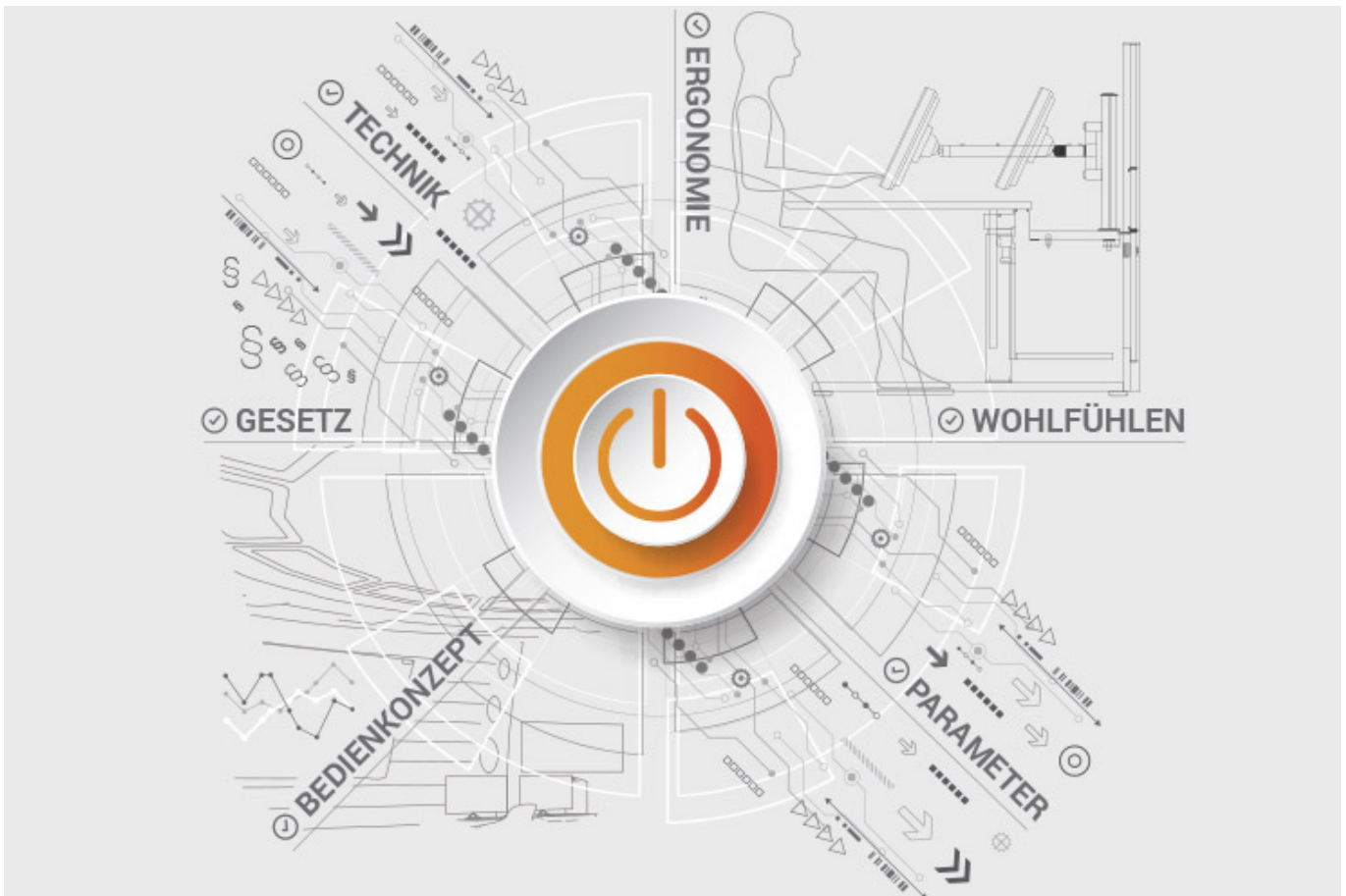
ALL PROJECTS

Documents for download

- [Project report on central system monitoring at Otto-Versand Hamburg \(PDF\)](#)

JST product overview: Think of everything!

Optimise control rooms with the following components



Analysis and planning of your control room

Are you planning changes in your control room? Or would you like to breathe some fresh air into your control room? Then make use of the proven planning packages or the free online analysis from JST. Our experts will support you in accordance with BAUA: Study and all important standards and guidelines.

[More about the free analysis](#)



Large-display technology – react faster!

Proactively present important information to the right people – before an incident can have a major impact. With scalable large display walls based on LCD displays and Cube technology, we are sure to find the right large-format system for your 24/7 operation!

More about JST large-display technology



myGUI® – User interface for large-format system, workplace & infrastructure

The intuitive myGUI® user interface in the 3D layout of your control room offers maximum operating convenience for your MultiConsoling® system. With just one click you can operate workstations, monitor walls and infrastructure – always absolutely safe and excellent in stressful situations.

[More about myGUI®](#)



MultiConsoling® – The Control center control room

MultiConsoling® is the high-availability control center for connecting all of the signals from your systems to the monitors at the operator's workstation and on the monitor walls. Transmission takes place in real time and does not require any software on your computers.

[More about MultiConsoling®](#)



Control room furniture: ergonomic operator consoles, Recaro operator's chair, AllMedia Conference System

You can get furniture and technology from a single source at JST. The highly stable Stratos operator consoles, with height adjustment and suitable surrounding furniture, form an ergonomic base for your control room.

[More about control room furniture](#)



Large-screen control system with graphic controller

With the IP-based graphic controller you can get your monitor wall going. The graphic controller records all video signals over the IP network simultaneously and spreads them out at any position and in any scale on the large display wall.

[More about graphic controllers](#)



PixelDetection® – the operator's eye

Shorten your reaction times! With PixelDetection®, you will receive the right alarm at exactly the right moment and always be able to see an overview. Proven for many years and repeatedly awarded, PixelDetection® is also known as the “artificial eye of the operator”.

[More about PixelDetection®](https://www.jungmann.de/)



JST myLogin® – the operator's login

JST myLogin® is a revolutionary solution for logging on and off centrally and quickly from all operator workstations with your company ID. The login/logout process only takes a few moments. If you want, you can also save your personal layout of the screen contents.

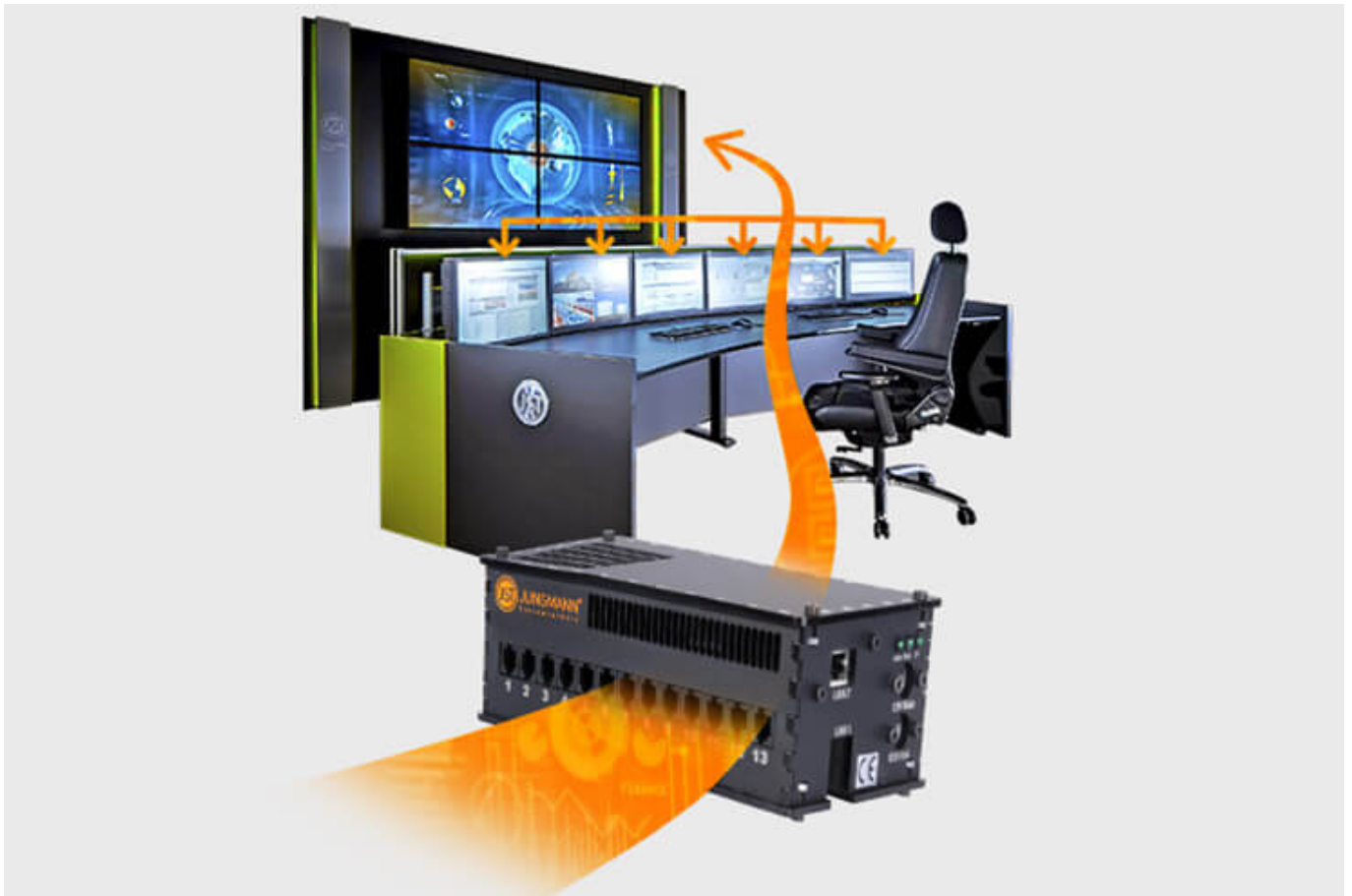
[More about myLogin®](#)



CockpitView – the operator’s dashboard

Create dashboards with content from different computers on different networks! CockpitView offers you the perfect overview of your most important applications at a glance. With CockpitView you can stay in control and reduce monitors at the workplace or even the large-format system.

[More about CockpitView](https://www.jungmann.de/)



Automation for Videowalls and operator workstations

With the JST CommandBox, you can monitor circuits, relays, audio signals, and much more, and have them automatically switched on at defined workstations or on the monitor wall when critical values are detected. The range of applications is almost unlimited!

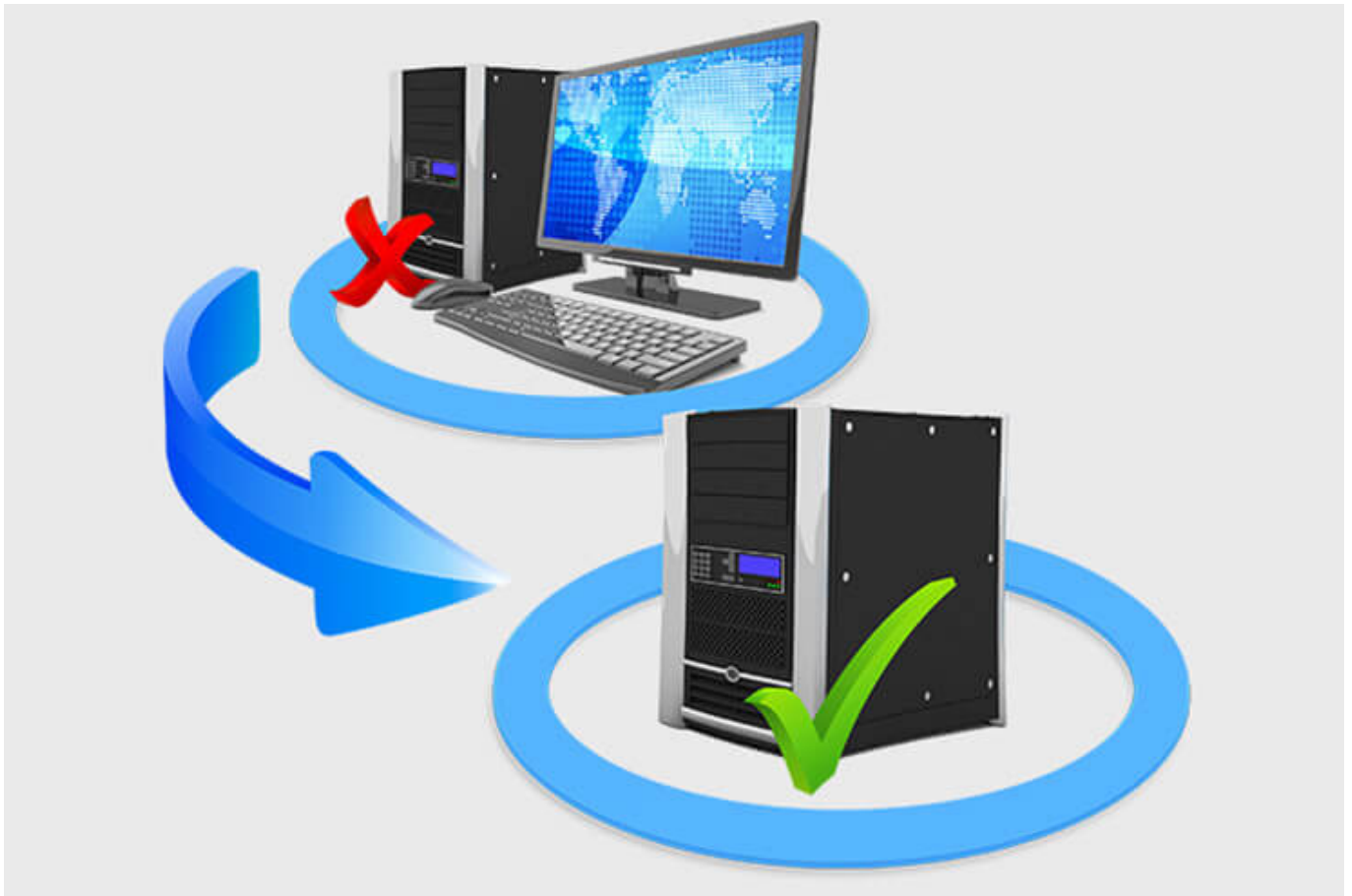
[More about ControlRoom Automation](#)



ControlRoom Remote: Connection of distributed systems and locations

The optional remote interface of JST Systems allows you to visualise and operate remote computers and entire control rooms. Even complex emergency scenarios for backup control rooms are feasible!

[More about ControlRoom Remote](#)



Computer relocation and PC remote control

By relocating computers from the control room to the technical room, you can reduce the thermal load and create more legroom for your employees. Additional advantages are the central administration of the computers as well as the physical access protection in the secured technical room.

[More about computer relocation](#)



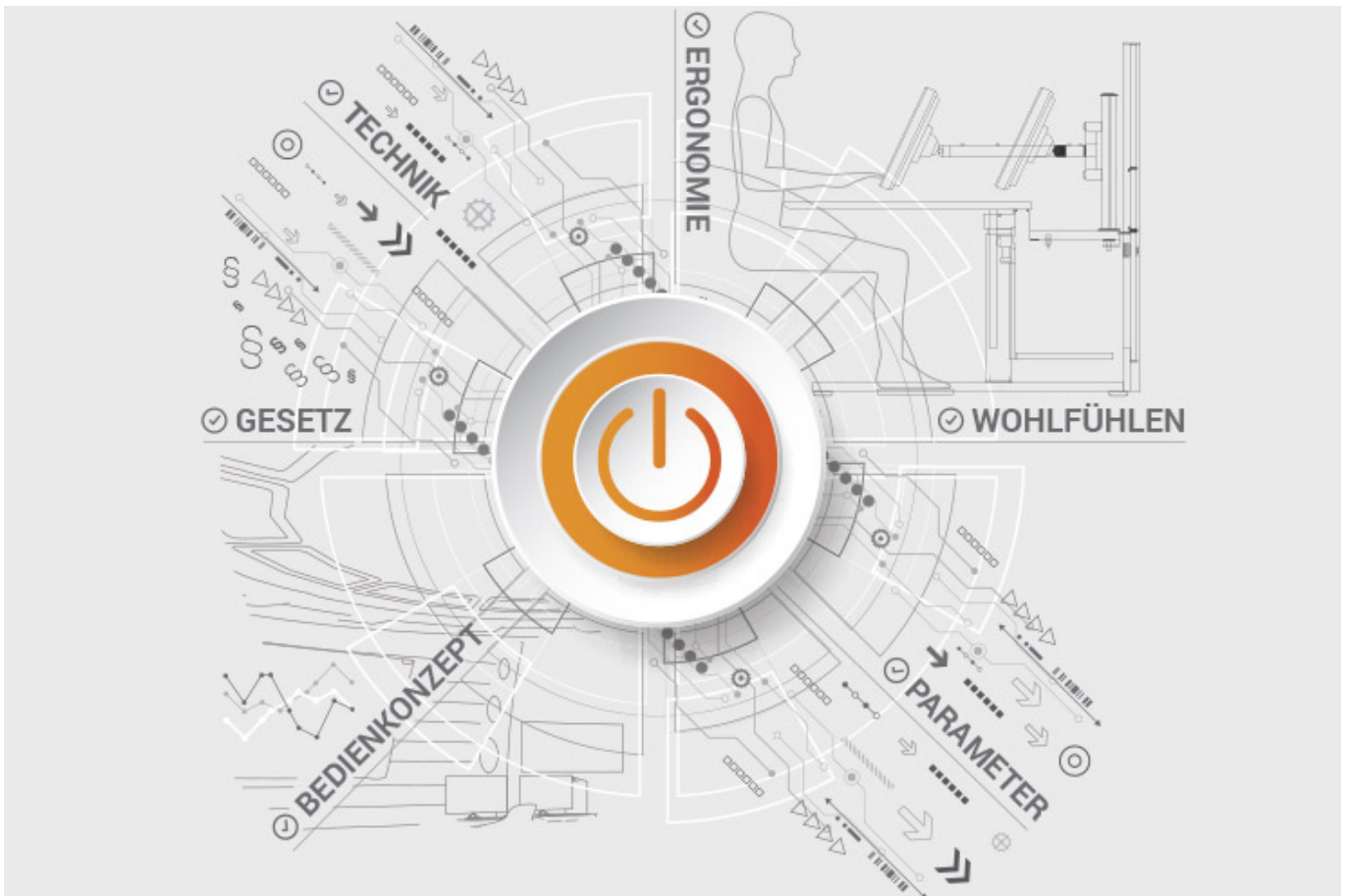
Optional service and maintenance packages

To ensure that your control room stays as available as you need it to be, we offer preventative maintenance packages in various scopes and forms. You will receive customised solutions that will support your market and competitive success.

[More about service from JST](#)

JST product overview: Think of everything!

Optimise control rooms with the following components



Analysis and planning of your control room

Are you planning changes in your control room? Or would you like to breathe some fresh air into your control room? Then make use of the proven planning packages or the free online analysis from JST. Our experts will support you in accordance with BAUA: Study and all important standards and guidelines.

[More about the free analysis](#)



Large-display technology – react faster!

Proactively present important information to the right people – before an incident can have a major impact. With scalable large display walls based on LCD displays and Cube technology, we are sure to find the right large-format system for your 24/7 operation!

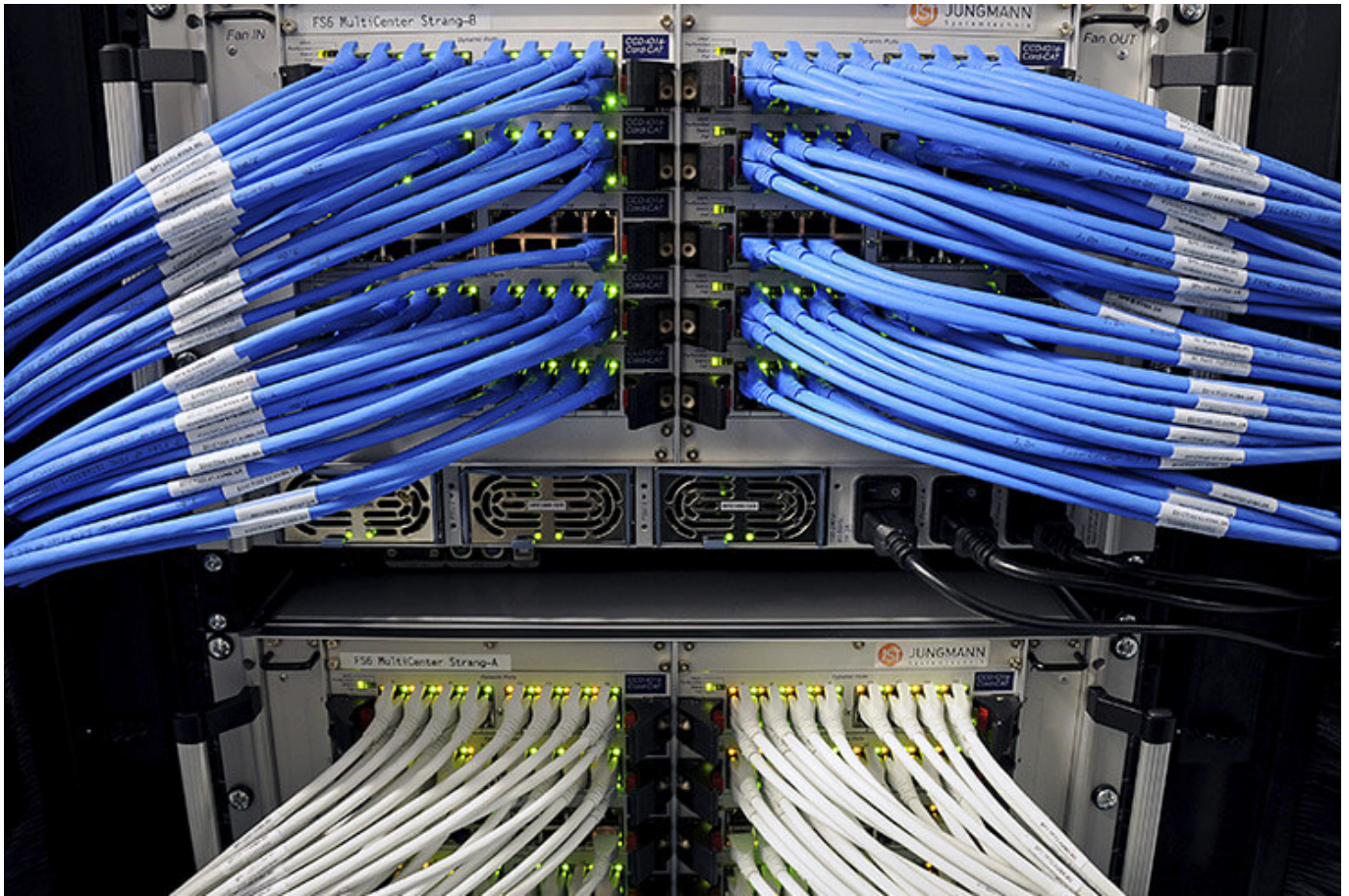
More about JST large-display technology



myGUI® – User interface for large-format system, workplace & infrastructure

The intuitive myGUI® user interface in the 3D layout of your control room offers maximum operating convenience for your MultiConsoling® system. With just one click you can operate workstations, monitor walls and infrastructure – always absolutely safe and excellent in stressful situations.

[More about myGUI®](#)



MultiConsoling® – The Control center control room

MultiConsoling® is the high-availability control center for connecting all of the signals from your systems to the monitors at the operator's workstation and on the monitor walls. Transmission takes place in real time and does not require any software on your computers.

[More about MultiConsoling®](#)



Control room furniture: ergonomic operator consoles, Recaro operator's chair, AllMedia Conference System

You can get furniture and technology from a single source at JST. The highly stable Stratos operator consoles, with height adjustment and suitable surrounding furniture, form an ergonomic base for your control room.

[More about control room furniture](#)



Large-screen control system with graphic controller

With the IP-based graphic controller you can get your monitor wall going. The graphic controller records all video signals over the IP network simultaneously and spreads them out at any position and in any scale on the large display wall.

[More about graphic controllers](#)



PixelDetection® – the operator's eye

Shorten your reaction times! With PixelDetection®, you will receive the right alarm at exactly the right moment and always be able to see an overview. Proven for many years and repeatedly awarded, PixelDetection® is also known as the “artificial eye of the operator”.

[More about PixelDetection®](#)



JST myLogin® – the operator's login

JST myLogin® is a revolutionary solution for logging on and off centrally and quickly from all operator workstations with your company ID. The login/logout process only takes a few moments. If you want, you can also save your personal layout of the screen contents.

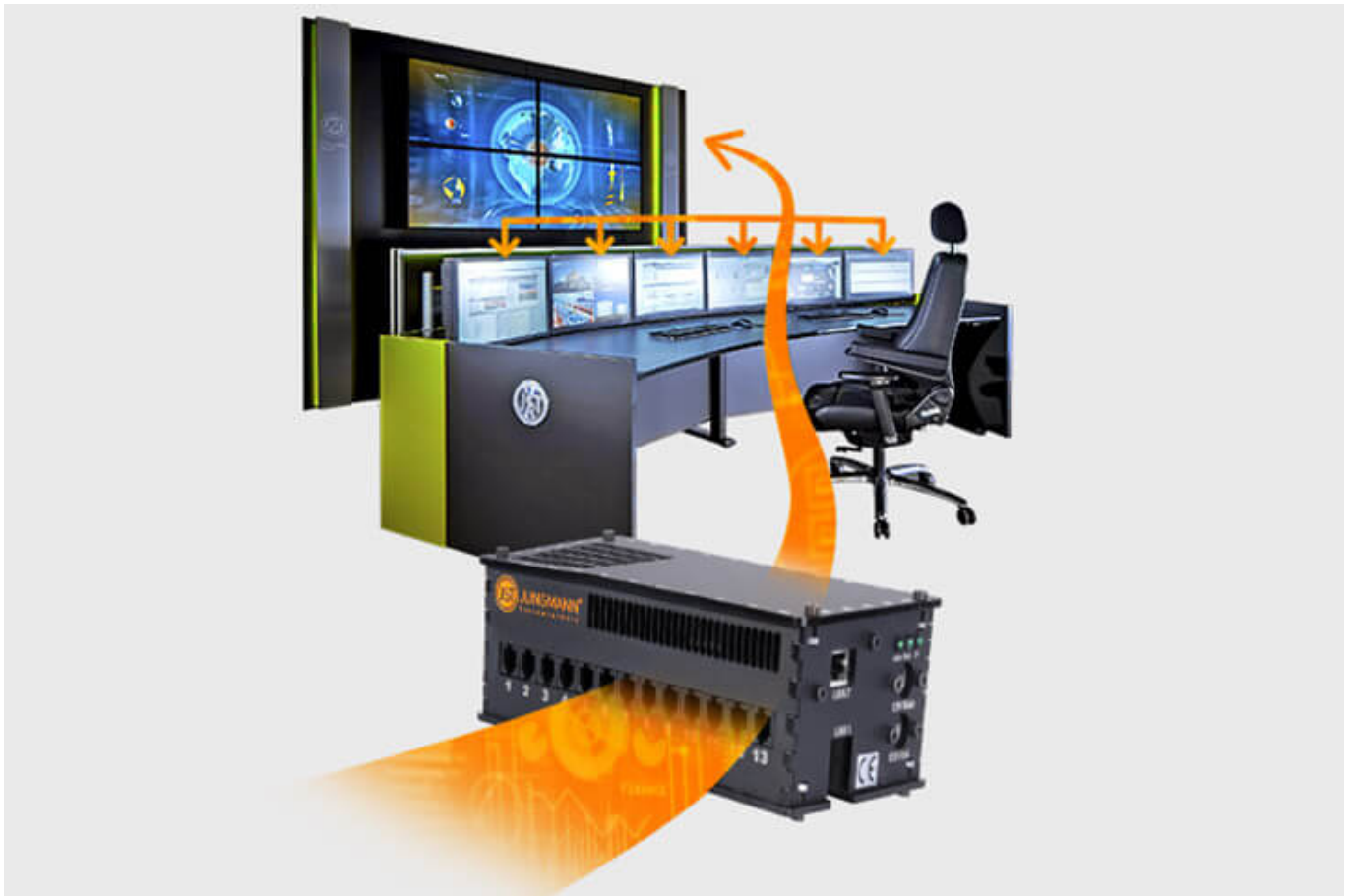
[More about myLogin®](#)



CockpitView – the operator’s dashboard

Create dashboards with content from different computers on different networks! CockpitView offers you the perfect overview of your most important applications at a glance. With CockpitView you can stay in control and reduce monitors at the workplace or even the large-format system.

[More about CockpitView](https://www.jungmann.de/)



Automation for Videowalls and operator workstations

With the JST CommandBox, you can monitor circuits, relays, audio signals, and much more, and have them automatically switched on at defined workstations or on the monitor wall when critical values are detected. The range of applications is almost unlimited!

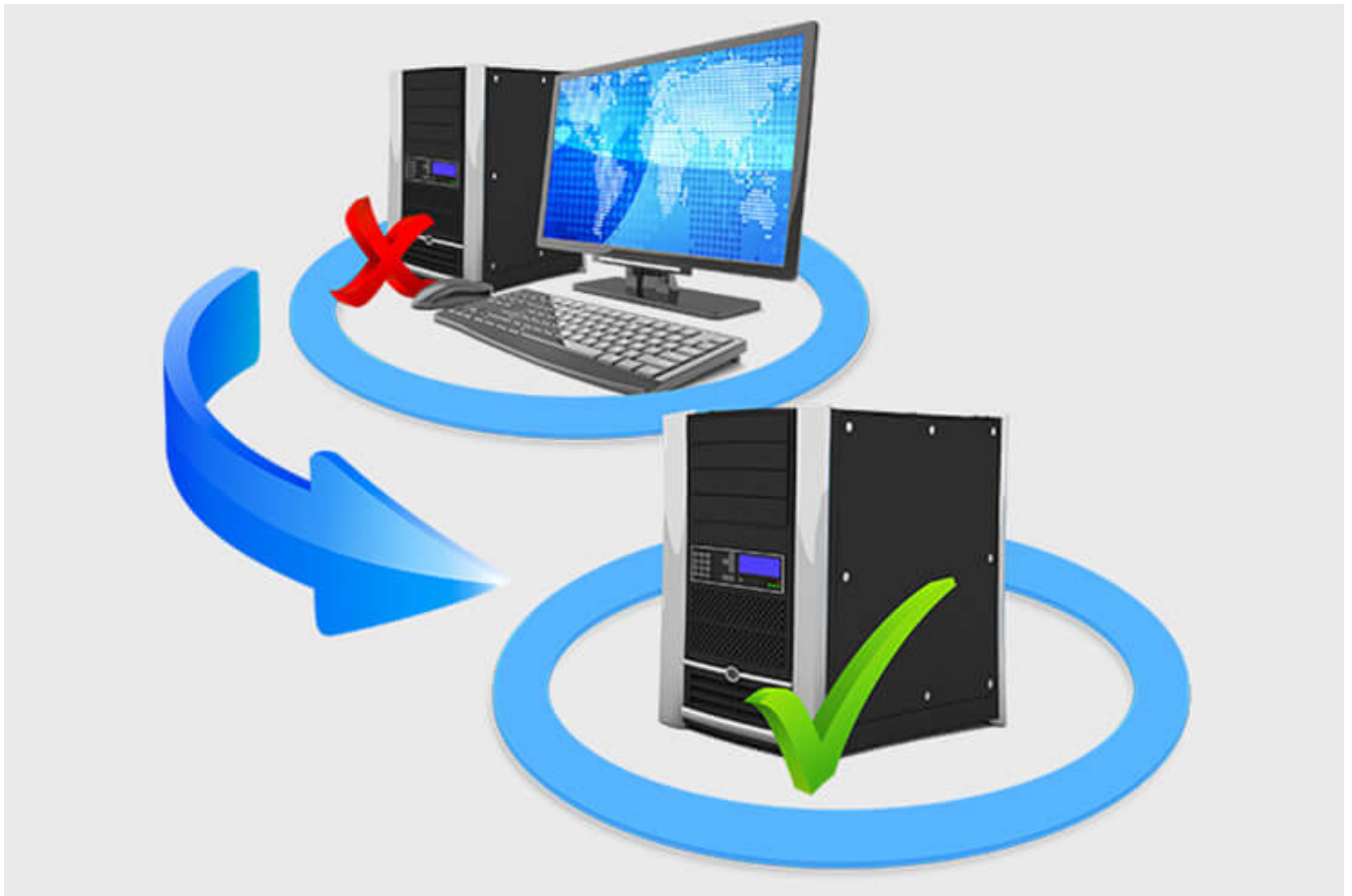
[More about ControlRoom Automation](#)



ControlRoom Remote: Connection of distributed systems and locations

The optional remote interface of JST Systems allows you to visualise and operate remote computers and entire control rooms. Even complex emergency scenarios for backup control rooms are feasible!

[More about ControlRoom Remote](#)



Computer relocation and PC remote control

By relocating computers from the control room to the technical room, you can reduce the thermal load and create more legroom for your employees. Additional advantages are the central administration of the computers as well as the physical access protection in the secured technical room.

[More about computer relocation](#)



Optional service and maintenance packages

To ensure that your control room stays as available as you need it to be, we offer preventative maintenance packages in various scopes and forms. You will receive customised solutions that will support your market and competitive success.

[More about service from JST](#)

Was möchten Sie als Nächstes tun?

Ich möchte

- [das kostenfreie Praxisbuch der Kontrollräume anfordern](#)
- [einen Rückruf für eine unverbindliche Beratung](#)
- [den Kontrollraum-Simulator in Buxtehude besuchen](#)
- [eine digitale 360°-Tour in einem Kontrollraum erleben](#)

<https://www.jungmann.de/>

- [mehr über Kontrollräume auf dem ko:mon Kongress erfahren](#)

We are happy to answer your questions regarding the optimisation of control rooms

0800-777 8 666



By loading the video, you agree to YouTube's privacy policy.

[Learn more](#)

[Load video](#)

☐ Always unblock YouTube