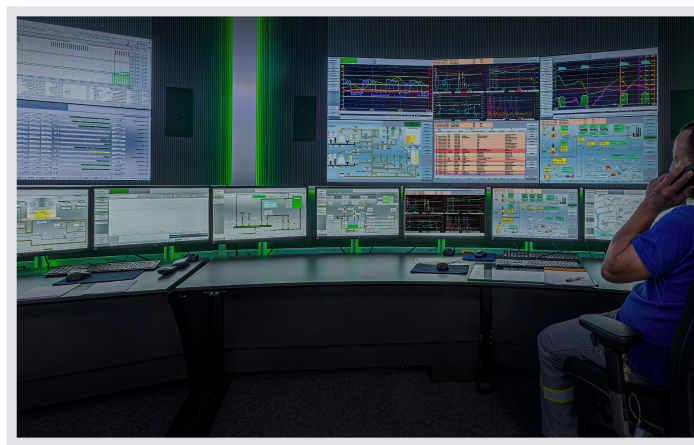


## Monitor walls and display walls with seamless 24/7 LC displays and alarm function

JST DisplayWalls are the big players in your control room. They are event-controlled, this means **that computers and cameras can be automatically switched on and operated in real time without the operator having to intervene**. The operator refers to this as “TeamView” because now the entire team has the same level of knowledge about the most important alarms.

**REQUEST A QUOTATION**



**Watch the video:** New control center for science – Interview with Ingo Müller (Helmholtz-Zentrum Berlin)

**PLAY NOW**

### JST DisplayWalls: Important advantages and possible designs

- **Quality:** Designed for 24/7 operation in control rooms
- **Proactive:** Interfaces for event-controlled alarming with PixelDetection®
- **Well laid out:** Identifying causes and making decisions through “TeamView”
- **Operation:** In real-time with keyboard & mouse, directly on the monitor wall
- **Event control:** Computers and cameras are connected fully automatically in case of alarms

### Six good reasons to choose JST DisplayWalls:

A DisplayWall consists of several large LC displays or rear-projection cubes that are installed on top of each other and side by side. This creates a **large and coherent image**.

- **01 – Detailed representation**

Relationships between different alarms are quickly and clearly recognized due to the large display area, large vertical and horizontal viewing angle, perfect illumination by energy-saving LED backlight and high pixel resolution.

- **02 – Longevity**

JST DisplayWalls are specially designed for 24/7 continuous operation in control rooms. These are explicitly not televisions that are used in the private sector.

- **03 – Fast cause and decision finding through “TeamView**

The entire control room team receives the most important information simultaneously. TeamView can even be operated simultaneously or alternately and in real-time directly on the DisplayWall. It becomes a real extension of the workstation desktop. Faster reaction and interference suppression through noticeably improved teamwork.

- **04 – Clear, structured, tidy**

By combining the most varied system, plant and hazard states, more efficient monitoring and control is made possible. There is no need for many workstation monitors. The operator always keeps the overview.

- **05 – JST DisplayWalls have interfaces for event-controlled alarming!**

This means: Display of the most important alarms, at the required time, at the right place and in the optimal size. Only in this way does the DisplayWall become a secure information hub where no alarm remains undetected.

- **06 – More decision safety**

In order to be able to act even faster and always in a coordinated manner, additional information is added to the alarms automatically and depending on the situation. A correlation of different alarms is also possible in a variety of ways. Only JST offers this special intelligence.



### INFRALEUNA START VIRTUAL TOUR!

**JST Large screen wall paneling:** In the InfraLeuna central control room, the cladding of the large screen wall – here equipped with eight 46-inch displays with extra-slim frames – not only reduces the noise level in the control room but also offers additional storage space thanks to the multifunctional equipment with hinged doors.

**Perfect service accessibility – even for displays located in the middle of a video wall – the JST QuickOut mounting system.** By slightly pressing the outer edges of the display, each individual display slides forward (quick-out) to provide access to rear connections and technical components in case of inspection.

**THIS IS EXCITING: HOW DO THE IMAGES GET ONTO THE MONITOR WALL?**

**DISPLAYWALL DATA SHEET**

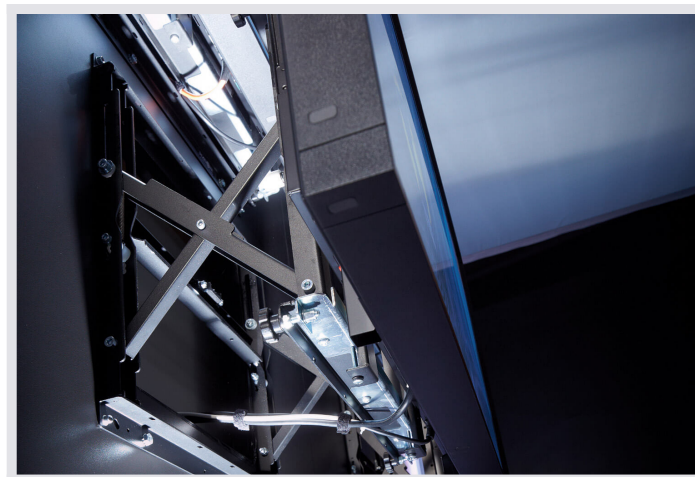
## DisplaySuit

The DisplaySuit: functional, perfect in design and unique in workmanship. The available equipment variants not only provide a visual highlight in your control room. The combination with the QuickOut mounting system also sets standards in practical terms. Even maintenance during operation is no problem.

The DisplaySuit is available in three versions:

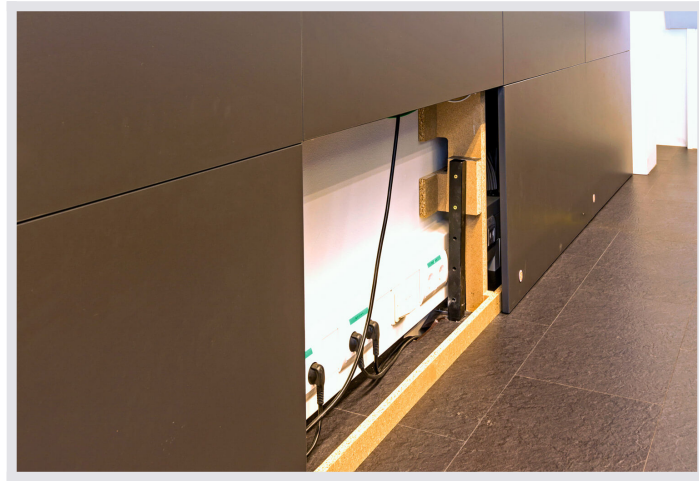


**The JST DisplaySuit is available in three versions.** Here – Version C with AlarmLight and wide wall paneling



**With the QuickOut mounting system,** individual displays can be easily pushed forward by light pressure on the outer edges – even during operation. There is also a technical compartment behind each large screen display. The displays can rest directly on the panels of the DisplaySuit





**DisplaySuit Panel:** Visually a successful solution – easily accessible wall panels under the large screen displays ensure a perfect first impression when closed. Hidden connections are located behind the panels, which can be removed easily and without tools.

## JST DisplayCover

The JST DisplayCover offers a visually particularly attractive variant for large screen technology concepts in the control room. In this **room-in-room construction**, the functional JST DisplayRacks serve as the basis for a solution that is both application and design oriented.

**The JST DisplayCover combines a whole range of essential functions for your control room in addition to its convincing appearance:** Disturbing fan noises are kept away from the control station as well as unwanted heat emissions. In addition, the hardware located in the newly created technology room can not only be installed in perfectly fitting racks, but also optimally cooled. Even access in case of maintenance does not influence what happens in the control room. The DisplayCover offers the possibility of cladding with special acoustic material as well as space for cabinet systems with different door variants and drawers.



JST large screen wall: Directly next to the displays on the **large screen wall** is a door that provides access to the newly created room-in-room – a special JST solution that keeps heat and noise away from the control room.



Thanks to a special brush seal between the large screen and cladding, a flush finish is created. The additional choice of acoustic material lowers the noise level in the control room and serves to seal off the noise behind the decorative DisplayCover.



**The structural variants of the DisplayCover are as varied as the requirements** of our customers: Cabinet systems with hinged or sliding doors, drawers with special equipment or integrated speakers – the JST DisplayCover can score both visually and functionally.



**JST large screen technology:** The six LC displays are perfectly integrated into the sound-absorbing large screen wall. On the side there is a door that...



... provides access to the room-in-room concept behind the video wall. The entire technology, including the workstations at the workstations, was installed remotely from the workstation using MultiConsoling®. This results in less heat and noise in the control room.

## JST DisplayRack

**You do not have a solid wall available for mounting your large screen displays?** Or would you like to remain flexible in the future when choosing your display sizes? Then the free-standing JST DisplayRacks are the right choice for you. The so-called basic unit – consisting of two side parts – can be extended with any number of extension units on request.

Among the many functional features of the DisplayRacks are precise adjustment. Screens can be aligned continuously and with millimeter precision both in height and width. **The result: a visually perfect, uniform joint pattern.** Other plus points include special aluminum cable ducts as well as the “invisible” castors integrated into the foot stabilizer, which ensure optimum service accessibility and allow the entire DisplayWall to be moved freely in the room.

Matching media boards with sliding doors are available as an option, providing space for technical installations or the paper tray.





**JST Large screen technology:** The hub of Messe Berlin's crisis management room: the 80 inch display with matching rack and media board.

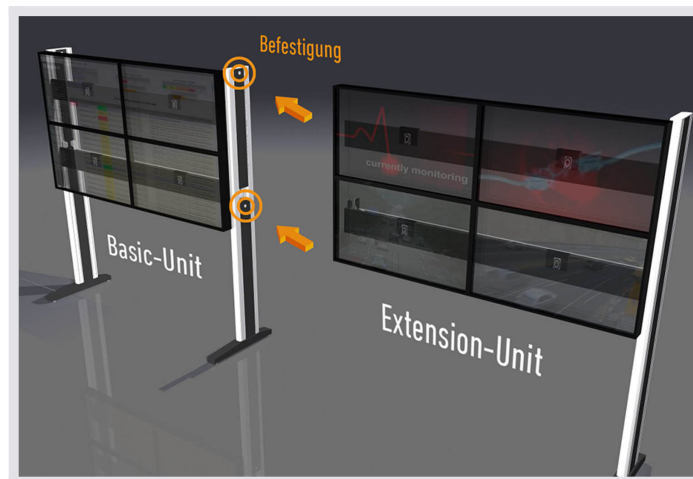


**JST DisplayWall:** Two large screen walls keep the entire control room team informed about the most important events. The large screens are a completely new instrument in the DREWAG control room – “An excellent tool for our monitoring tasks,” says project manager Andreas Rammer. The 24/7 optimized business displays are integrated in JST-DisplayRacks – the ideal solution if no load-bearing wall is available for the installation of the LC-Displays.

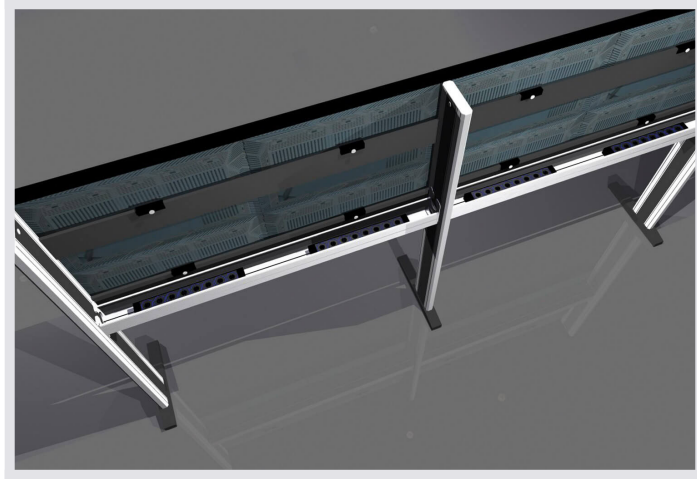




**JST Large screen technology:** Rear view of a JST DisplayRack – all displays can be continuously adjusted vertically and horizontally with millimeter precision; cables are neatly routed in special cable ducts.



**JST DisplayRack:** Illustration of the Basic Unit, whose two side parts can be extended to the left and right with any number of Extension Units.



**JST DisplayRack:** This is clearly visible in the rear view of a JST DisplayRack: The large-volume aluminum cable ducts accommodate cables, converters, power supply units, etc. and thus ensure perfect organization of the infrastructure.



**Foot stabilizer with integrated rollers:** If required, the DisplayRack can be installed directly in front of a wall and rolled forward linearly for inspection.





X



X



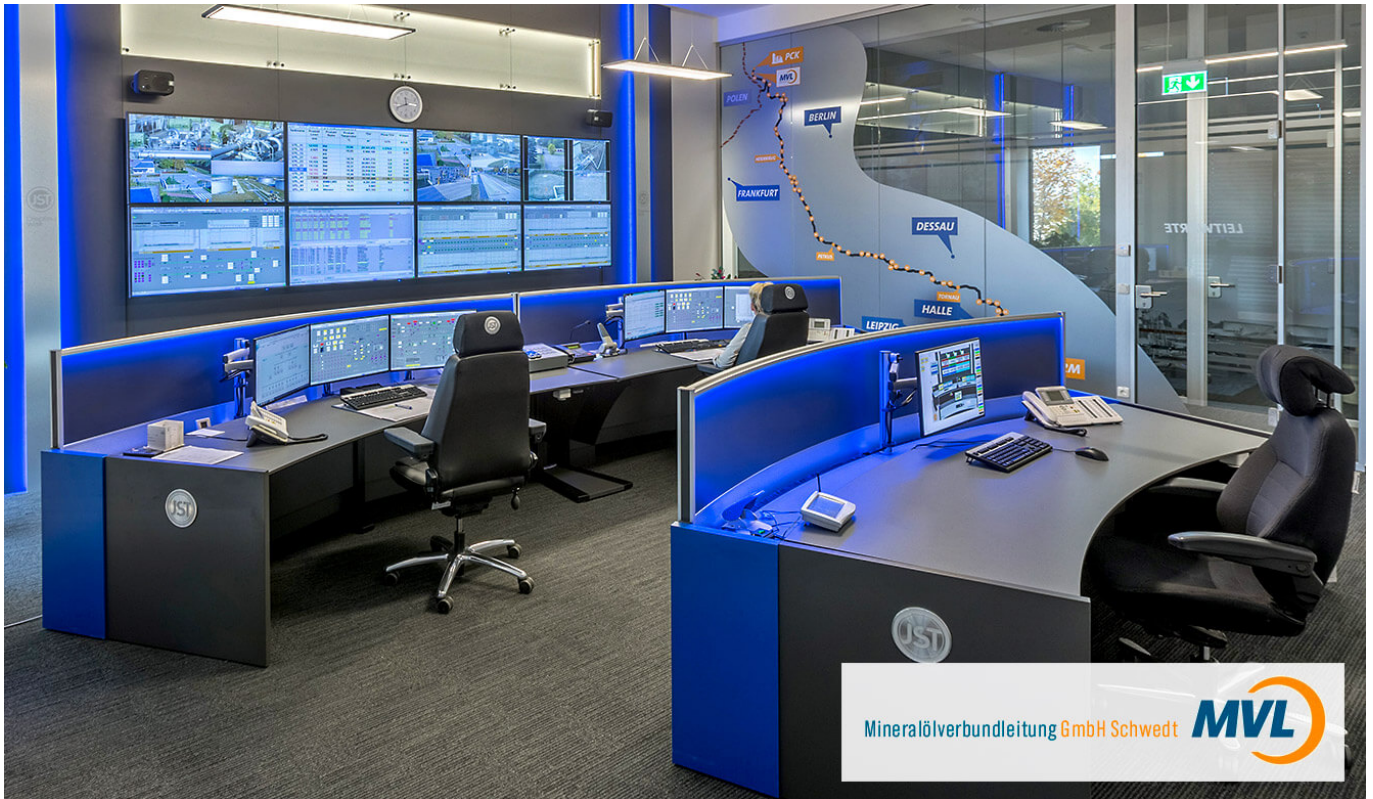


X



X





X





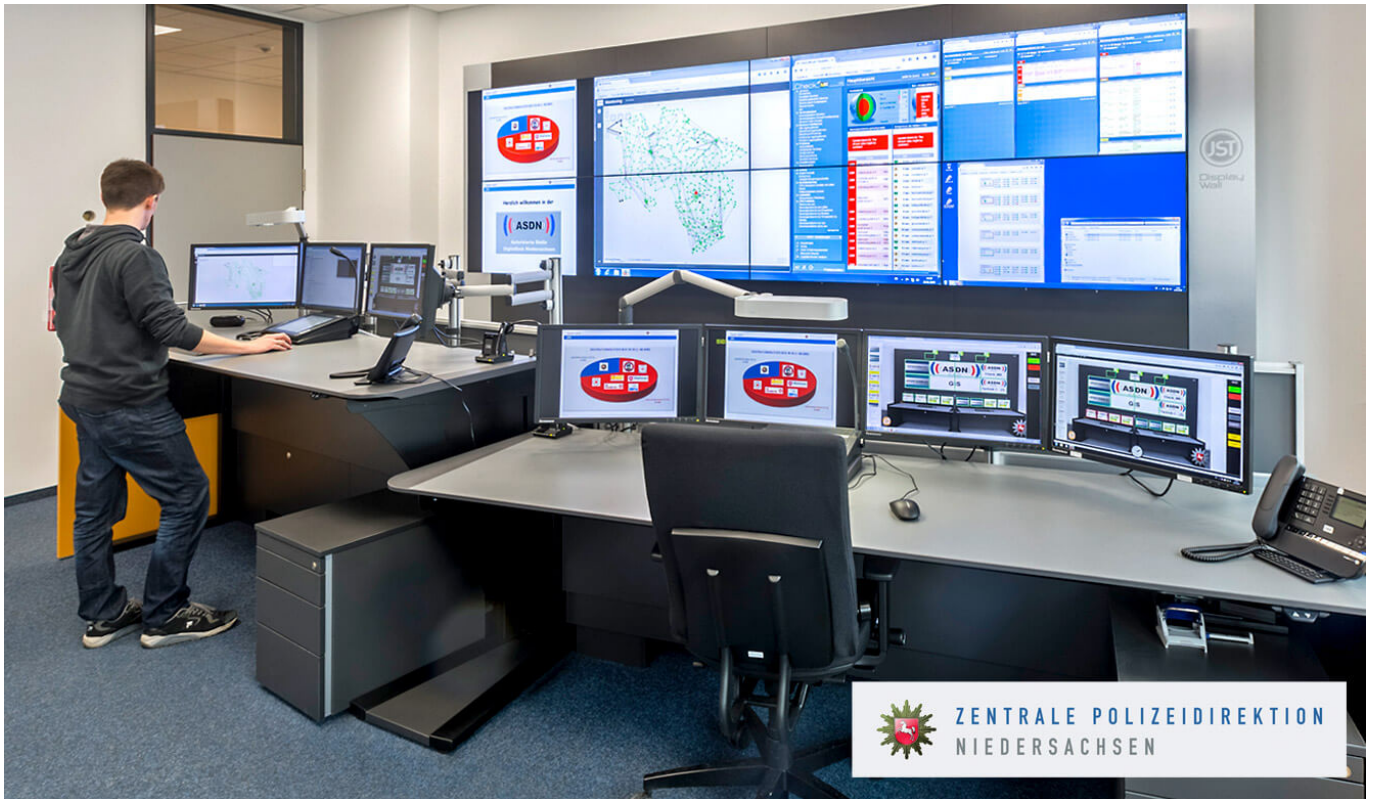


X



X





X



X





Would you like to find out more about JST's monitor walls?



I would like a callback for a non-binding consultation from the control room specialists at JST!

+49 4161 54044-0

Schedule a telephone consultation appointment. The consultation is **free of charge** and without obligation.

I would like to visit the Europe-wide unique control room simulator!

#### **SCHEDULING A "TEST DRIVE"**

Visiting the control room simulator is free of **charge**.

We ask for registration and reservation of dates.

<https://www.jungmann.de/>



I would like to receive “The Great Praxis Book of Control Rooms” from JST!

**REQUEST FREE OF CHARGE**

The praxis book is **free of charge** for JST customers.

**Chosen by leading companies and institutions**

R R  
Z \_

**otto group**

STADT  FRANKFURT AM MAIN

 GLOBAL TECH I

**R+V**

**plusnet**  
Ein Unternehmen der QSC AG

<https://www.jungmann.de/>



## AlarmLight for DisplaySuit

Unlimited color variety – optically and technically a real “bright spot” for your control room!

- **Shortened reaction times:** Event-controlled light signals are demonstrably perceived more strongly by the entire team.
- **Increased team awareness** during critical alarms. No alarm remains unnoticed!
- **Better visibility** during understaffed shifts
- **Simple integration** with your monitoring tools



**Thanks to AlarmLight, the operator's concentration is maintained at a high level.** The pleasant lighting of the workstation environment directly contributes to this – especially during the dark hours of the day.





**The AlarmLight is controlled by your monitoring or process control system to change color depending on the event.** The flashing and pulsing of the AlarmLight can also be individually adjusted. Either you decide on a pre-programmed color spectrum or you set the AlarmLight manually by remote control according to your wishes.





The AlarmLight light band is located in the stainless steel strips to the left and right of the large screen wall; optionally also integrated in the back wall of the Stratos Operator Desk. Event-controlled light signals via your monitoring or process control system direct the focus of the control room team to critical alarms.

We will gladly answer your questions about our control stations, process control rooms and control centers

 **+49 4161 54044-0**

**What clients report about their experience with JST – Jungmann Systemtechnik®**





"We now flexibly switch on the systems we want to see depending on the situation – with just one mouse and one keyboard. Three screens at the workstation and the large-screen technology provide a perfect overview."

Head of Technical Systems CÜ Charité

**TO THE PROJECT**



**protec**  
service

“Great products, great service and at every point of our cooperation we met a very friendly team from JST.”

Managing Director

**TO THE PROJECT**



“What was presented to us in the control room simulator made me a fan of the project from the start”

Division Manager Network Management // Project Manager

## TO THE PROJECT

---



“The particular advantages of a large screen are obvious. The fewer monitors at the workplace, the better. The more focused the colleagues can work”.

Project engineer of Eisenbahnen und Verkehrsbetriebe Elbe-Weser GmbH (evb)

## TO THE PROJECT





“The visit to the control room simulator and the expert advice were great – one of the biggest deciding factors for us.”

Consultant to the management of EFM (de-icing and aircraft towing at Munich Airport) GmbH

## **TO THE PROJECT**



"We have sounded out the market thoroughly and are simply convinced that JST is the best partner for us. Consulting, technology and quality are right. At JST, you're dealing with professionals from A to Z."

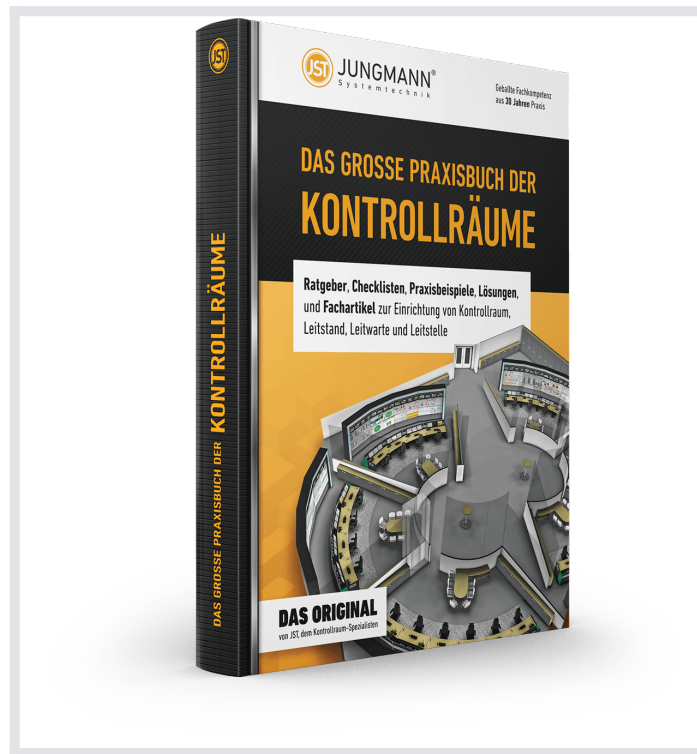
Managing Director of Mineralölverbundleitung (MVL) GmbH Schwedt

## TO THE PROJECT

---

---

## THE GREAT PRACTICAL BOOK OF CONTROL ROOMS



**Guidebooks, checklists, practical examples, solutions and technical articles** for the installation of control rooms, control stations and control centers

### **REQUEST FREE OF CHARGE**

The great practical book of control rooms is free of charge for JST customers and interested parties.

### **What would you like to do next?**

I would like

- request the free control room practice manual
- a callback for a non-binding consultation
- visit the control room simulator in Buxtehude
- experience a digital 360° tour in a control room
- learn more about control rooms at the ko:mon congress



## FAQ

Monitor walls and display walls must be viewed live to be able to evaluate the quality. Is that possible with the control room specialists?

Our Monitor walls and display walls can be experienced live in our new control room simulator. They form the central component in every control room and are therefore also the heart of our control room planning. When designing the optimal monitor wall, we also think in detail about ergonomics, viewing angle, lighting and hardware. Because a monitor wall must ultimately meet all requirements perfectly. The display wall and monitor wall should always be seen as a central point to which all other elements are aligned. How the perfect interaction between display wall, monitor wall and workstation works, which innovative technical refinements JST has also developed and how fast the transmission of signals works, we would be happy to show you in our control room-Simulator.

Monitor walls must offer me a real cinema experience (?). Is this the case with the JST display wall?

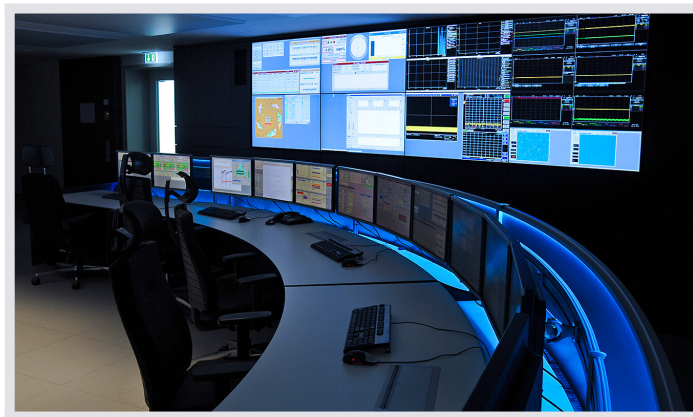
Monitor walls and display walls with 4K or better 8K – we hear this wish more and more often from our customers lately. The development of high-resolution displays has progressed rapidly in recent years. Some customers also want outstanding visual experiences on the monitor wall in their control room. But what is sensible and comprehensible in the consumer area at home or in the cinema makes little sense in the control room. Why we cannot recommend UHD on the monitor wall? The costs are too high! For a 4K monitor wall with suitable technology, graphics cards, cabling, etc., the costs are three to four times higher. Therefore, our recommendation for the display wall in the control room is: Full HD. “We only recommend our customers displays with special S-PVA panels for reliable 24/7 operation – with ultra slim frames if desired. For the control room, the following applies: Full HD is not only the most economical, but also the most practical decision when it comes to monitor walls and display walls,” says Dirk Lüders, systems IT specialist for signal and security systems at JST.

Display walls and monitor walls must constantly provide up-to-date information. How do you keep the overview?

Display walls and monitor walls are primarily used to provide the control room team on duty with all important information just in time. Alarms must be recognized immediately. Incidents should be rectified quickly. To ensure that this succeeds reliably, JST has developed the MultiConsoling®. It controls in real time your display wall or monitor wall independent of the IP network. MultiConsoling® thus combines the

characteristics of a graphics controller with the advantages of a fail-safe matrix system and thus ensures the highly available control for your monitor wall and display wall.

For transmission to the display wall, MultiConsoling® simultaneously records all signals of the components to be displayed, such as computers (including keyboard, mouse, monitor, audio), analogue or digital cameras and TV, and distributes them in real-time to individual displays or as BigPicture to the entire display wall consisting of several screens. Thanks to our myGUI® user interface each operator has within four minutes the control of the entire display wall firmly under control!



**TIME LAPSE: INSTALLATION OF THE HZB CONTROL ROOM**