

Client:

# INGAVER

Kategorie: Switch room, Critical infrastructures.

## New energy control room puts competence at the center



JST control room concept: The new control room of INGAVER GmbH in Bremen is characterised by carefully thought-out spatial planning with integrated air conditioning and lighting system; a future-oriented joint project of the companies swb Erzeugung and ArcelorMittal Bremen, in which synergy effects are to be used to optimise the energy supply.

Four control rooms on a company site. Managed by two companies that cooperate with each other to optimise the energy supply for steel production on the Weser. What could be more obvious than an alliance? "In the past we have always been interested in close cooperation. That is why we are joining forces at this point", explains INGAVER Energy Manager Thorsten Doege the joint path taken by swb and ArcelorMittal Bremen.

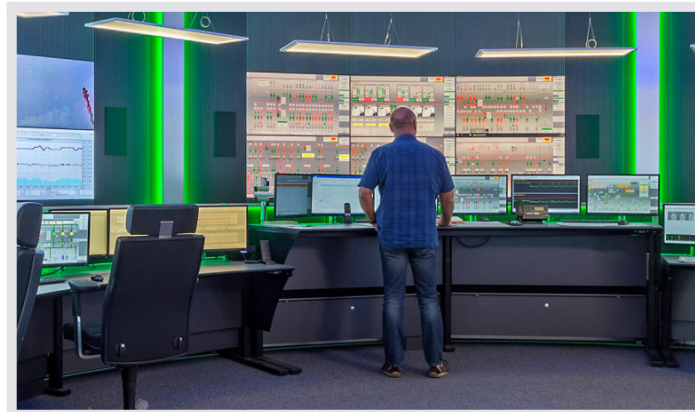
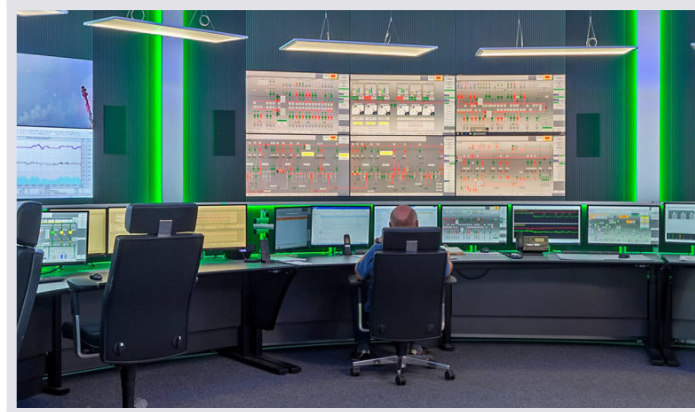
### Central energy control room as a first step

As the first step of the new company, four distributed control rooms were combined into one central control room. From here, the operating team can organise and manage all energy media on site – such as electricity, water, technical gases and compressed air. swb CEO Dr. Torsten Köhne calls the merger and

with it the new control room “an important step towards future-oriented sustainable steel production.”

## Ergonomic requirements for technology and furniture

Technology and furniture in the new energy control room should also be “forward-thinking.” A requirement that the control room professionals at JST have fully met. Project manager Thorsten Doege comments: “Previously, each individual employee had to monitor around 20 screens arranged in two rows. Something urgently needed to be done.”



Workstation in control room with height-adjustable desk.

## Individual adjustment possible at the workplace

The solution: large-display technology. Today, each operator uses six displays at his workstation and six more displays on the Video Wall. The ergonomics in the energy control room were additionally optimised by height-adjustable desks and special 24/7 chairs.

## Representative control room

The employees also rate the INGAVER control room as thoroughly positive. They were involved in the planning at an early stage of the project. Made possible by virtual tours thanks to photo-realistic 3D plans, produced by the JST specialists.

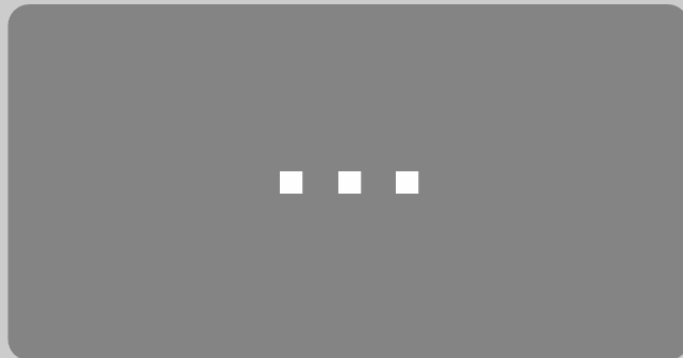


Virtual 360° tour through the control room.

## Praise for quality of advice and cooperation

For the energy manager one thing is certain: “The cooperation with JST ran perfectly from the first visit to the Buxtehude control room simulator all the way up to its completion.”

## New control room for INGAVER



By loading the video, you agree to YouTube's privacy policy.

[Learn more](#)

[Load video](#)

Always unblock YouTube



**The project team is certain: "That ergonomics is an important part of the design of a new control room."**

## Project Manager Thorsten Doege (right)

– here with his project team colleagues Thomas Kalkau, Jörg Tienken and Andre Mahler (from left)

**REQUEST AN OFFER WITHOUT OBLIGATION**

The components used in this project:



**DisplayWall** with special S-PVA panels for reliable 24/7 operation - optional with proactive alarm function



**Stratos X11<sup>®</sup> control room desk** – optional with height adjustment and proactive AlarmLight system



**24/7 Recaro operator chair** – optional with seat surface extension

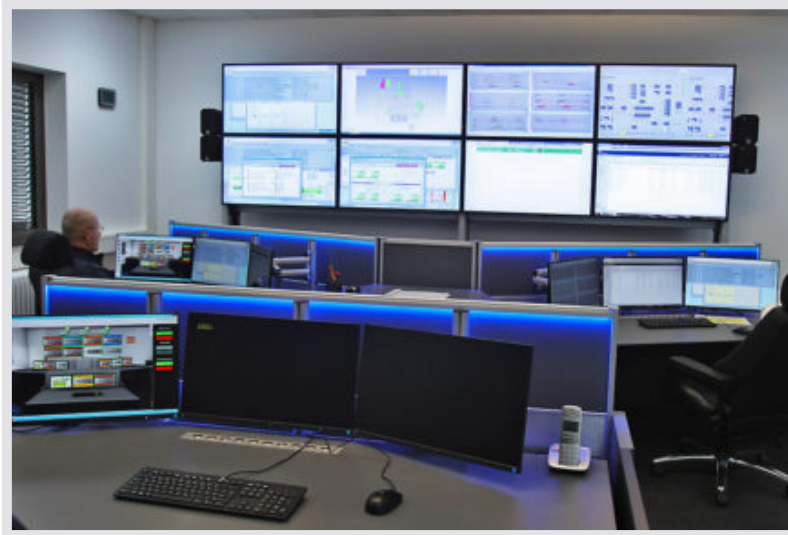
Surrounding furniture

Planning / 3D planning

Conference table system

Complete audio system

## Other projects with a similar task



## Roche Diagnostics, Penzberg

[Find out more](#)

---



## InfraLeuna



INFRALEUNA®

[Find out more](#)

---